







 2 Bedrooms |  1 Receptions |  1 Bathrooms |  EPC Current C

Charming Terraced Cottage – Modern and Contemporary Interior - Two Bedrooms – Large Reception Room – Modern Kitchen – Integrated Appliances – Private Garden – Ample Storage Space – Gas Central Heating – Fantastic Ealing Location.

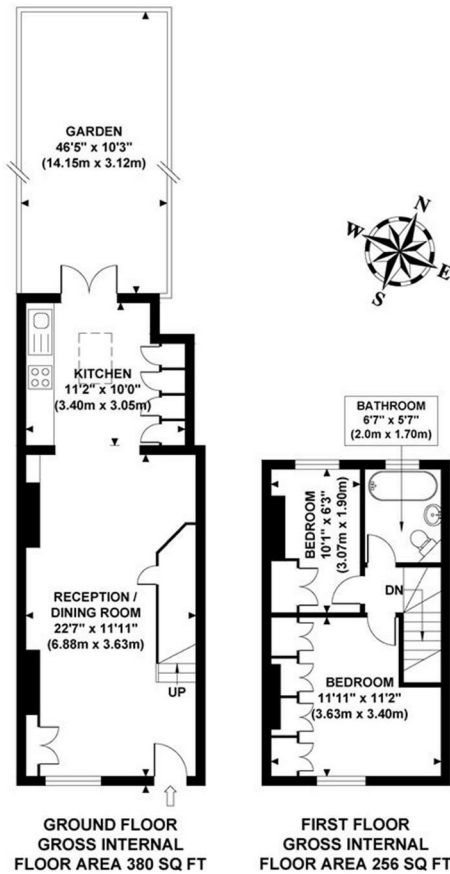
Situated in a fantastic residential location, this charming cottage is offered to the market furnished and is available from early June. With a stunning contemporary finish, the property has an abundance of natural light and space throughout and includes a large reception room, with space for dining, a brand new Hacker German kitchen featuring modern integrated appliances, two bedrooms (both with built in wardrobes) and a trendy bathroom fully equipped with a bathtub and over head shower. Further benefits include a private well maintained garden (fantastic for entertaining), solid oak parquet flooring, ample storage space, gas central heating (Hive heating) and an attractive neutral décor.

Warwick Road is in a very prestigious area of Ealing, as it is on the same road as The University of West London, and within a beautiful neighbourhood in its own right. With Ealing Green, South Ealing Road Park, and Walpole Park within half a mile, this house is spoilt for choice when it comes to green spaces. Ealing Broadway's bars, shops, and restaurants are conveniently positioned, as are a range of transport links making this property ideal for professionals - with Central, District and GWR lines from Ealing Broadway, and South Ealing Station's Piccadilly Line, and the local bus network, travel in and around London is quick and easy.

- Fantastic Location
- Modern and Contemporary Interior
- Two Bedrooms
- Private Well Maintained Garden
- Council Tax Band E
- Charming Cottage
- Bright and Spacious Reception Room
- Integrated Appliances
- Term (12 months)
- Deposit: £2653.84

HELLIWELL & CO

Approximate Gross Internal Area 636 sq ft / 59.10 sq m



Although every attempt has been made to ensure accuracy, all measurements are approximate and no responsibility is taken for any error, omission, or mid-statement. This floor plan is for illustrative purposes only and not to scale. Measured in accordance to RICS standards.

