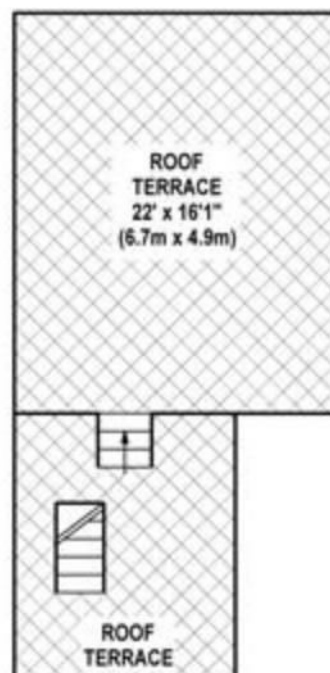
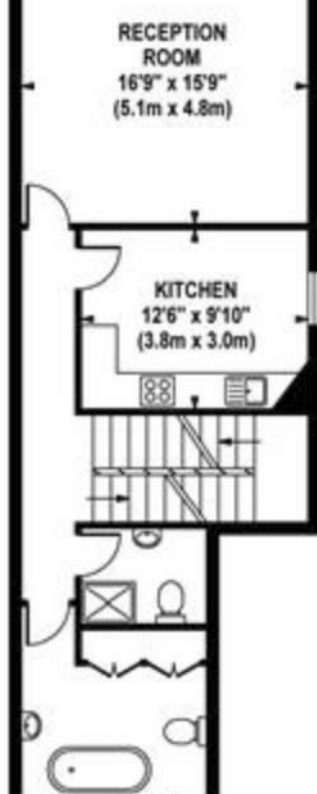




HELLIWELL & Co.

The Grove, Ealing, W5
£2,250 Per Calendar Month



Ideal for Professional Sharers – Large Three Bedroom Flat – Two Bathrooms – Spacious Reception Room – Furnished / Unfurnished – Roof Terrace - Fantastic Location - Available Beginning of August 2021.

An ideal home for professional sharers, this bright and spacious three double bedroom flat is offered to the market furnished or unfurnished and is available at the beginning of August 2021. The property which is placed in a fantastic location has a large reception room, a separate kitchen, three double bedrooms, a bathroom and a shower room. Further benefits include a roof terrace and ample storage space throughout.

Situated in the heart of Ealing Broadway, The Grove is ideally located for access to Ealing Broadway's tube station (Central and District lines, mainline and future Crossrail) and buy shopping centre. There are multiple bus routes in the area, beautiful open spaces including Lammas and Walpole Parks and an array of Ealing's local shops, cafes, restaurants and bars.

- Professional Sharers Welcome
- Spacious Three Bedroom Flat
- Large Reception
- Separate Kitchen
- Roof Terrace
- Fantastic Location
- Multiple Transport Links
- Furnished / Unfurnished
- Available August 2021



HELLIWELL & Co.

020 8799 3810

lettings@helliwellandcompany.co.uk



Energy Efficiency Rating

	Current	Potential
Very energy efficient - lower running costs		
(92 plus) A		
(81-91) B		
(69-80) C		
(55-68) D		
(39-54) E	53	55
(21-38) F		
(1-20) G		
Not energy efficient - higher running costs		
England & Wales	EU Directive 2002/91/EC	

Environmental Impact (CO₂) Rating

	Current	Potential
Very environmentally friendly - lower CO ₂ emissions		
(92 plus) A		
(81-91) B		
(69-80) C		
(55-68) D		
(39-54) E	47	48
(21-38) F		
(1-20) G		
Not environmentally friendly - higher CO ₂ emissions		
England & Wales	EU Directive 2002/91/EC	