



HELLIWELL & CO
ESTATE AGENTS

Overdale Road, Ealing, W5
£1,900 Per Calendar Month





🛏️ 2 Bedrooms | 🛋️ 1 Receptions | 🚿 1 Bathrooms | 📊 EPC Current C

Ground Floor Flat - Private Garden - Modern & Stylish Throughout - Two Bedrooms - Open Plan Living - Integrated Appliances - Ample Storage Space - Furnished / Unfurnished - Available October 2021.

Situated in a popular residential area, this bright and spacious ground floor flat is offered to the market in fantastic condition and is available in October 2021. With a neutral décor throughout, the property has a large open plan living room with modern integrated appliances, a breakfast bar and bi-folding doors leading out to the well maintained private rear garden. There is a master bedroom with fitted wardrobes, a second bedroom, a fully tiled shower room and an additional wc. Further benefits include attractive wooden flooring, ample storage space, gas central heating and sky lights.

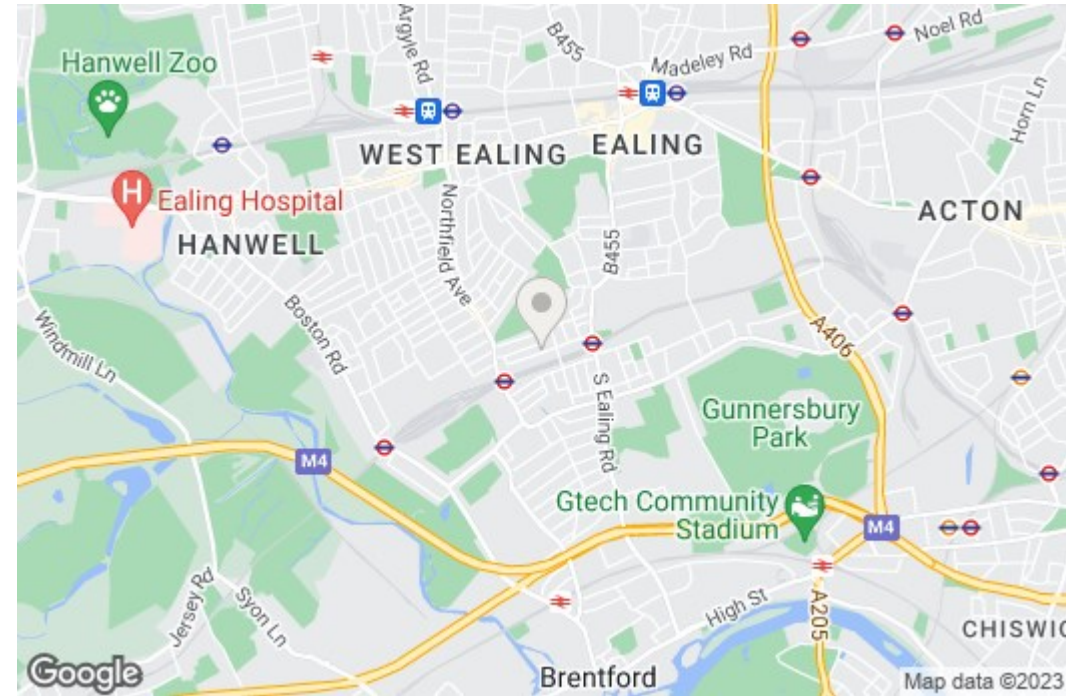
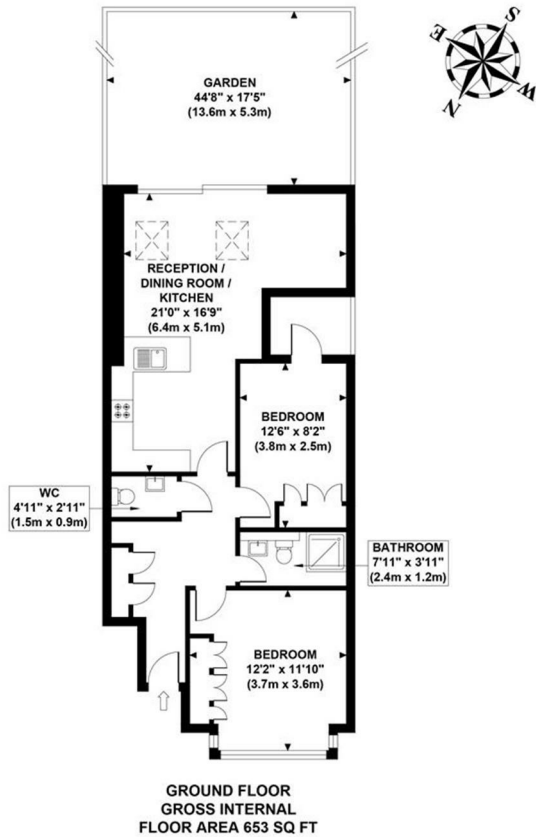
Overdale Road is located moments from Northfields Avenue where you will find a great selection of family run shops, restaurants, bars and local amenities including Lammas Park. Northfields tube station is also accessible where you have access to the Piccadilly line offering great services into and around Central London. Further transport links include the E2 and E3 buses, that take you straight to Ealing Broadway, alternatively you can take a beautiful walk through Walpole Park and you will have access to the vast array of shops and eateries Ealing has to offer.

- Ground Floor Flat
- Modern & Stylish Throughout
- Open Plan Living
- Ample Storage Space
- Available October 2021
- Private Garden
- Two Bedrooms
- Integrated Appliances
- Furnished / Unfurnished

HELLIWELL & CO.

OVERDALE ROAD

Approximate Gross Internal Area
653 sq ft / 60.66 sq m



Although every attempt has been made to ensure accuracy, all measurements are approximate and no responsibility is taken for any error, omission, or mid-statement. This floor plan is for illustrative purposes only and not to scale. Measured in accordance to RICS standards.