



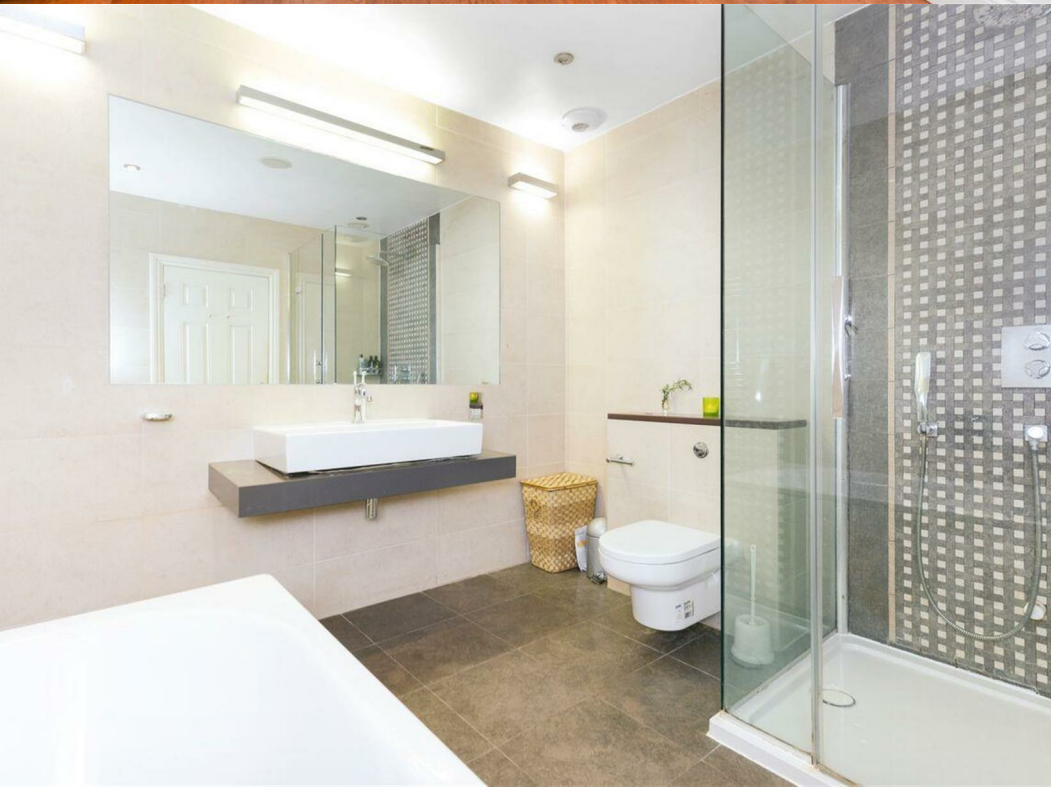




🛏️ 4 Bedrooms | 🚗 2 Receptions | 🚿 2 Bathrooms | 📊 EPC Current C

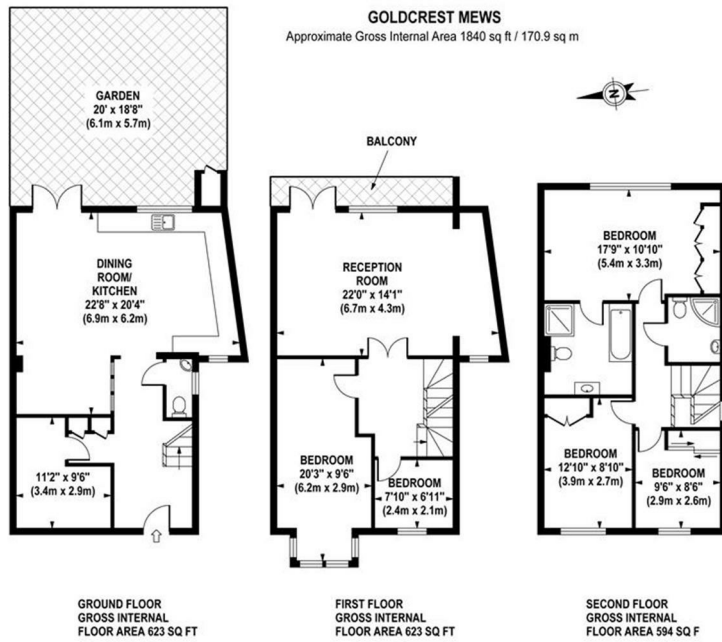
Gated Development – Townhouse – Four Bedrooms – Two Receptions – Integrated Appliance – Beautiful Views over Montpelier Park – Attractive Wooden Flooring – Useful Storage Room – Great Location.

Situated in a fantastic residential area in Ealing, this bright and spacious townhouse is placed within a gated development and is offered to the market furnished or unfurnished. Placed over three floors the property has been well maintained throughout offering a contemporary and modern living. The property has a large top of the range Schmidt and Elica kitchen with top of the range integrated appliances including Miele, Bosch and AEG, space for dining and direct access to the private rear garden, a reception room with wooden flooring and doors leading out to a charming balcony with beautiful views over Montpelier Park, a separate sitting room / family room with ample storage space, a master bedroom with built in wardrobes its own en suite shower room featuring Versace floor and wall designs, three further bedrooms and a family bathroom fully equipped with a bathtub and shower cubicle. This great family home further benefits from designer products throughout, including Hans Grohe, Villeroy and Boch, Zehnder radiators, off street parking, an additional downstairs wc, gas central heating, attractive wooden flooring with gas underfloor heating on the entire ground floor and is available February 2022.



Goldcrest Mews is a popular, residential road ideally located for access to Ealing Broadway station (Central and District lines, mainline and future Crossrail) as well as Ealing Broadways' bustling shopping town centre. There are numerous local shops, cafes, pubs and restaurants in the area with multiple bus routes also accessible. The beautiful open spaces of Montpelier Park are also nearby.

- Gated Townhouse
- Four Bedrooms
- Stylish and Modern
- Ample Storage Space
- Multiple Transport Links
- Placed Over Three Floors
- Balcony with Beautiful Views
- Two Bathrooms
- Montpelier Park Area



Although every attempt has been made to ensure accuracy, all measurements are approximate. The floor plan's for illustrative purposes only and not to scale. Measured in accordance to RICS standards.

