







🛏️ 5 Bedrooms | 🛋️ 2 Receptions | 🚿 3 Bathrooms | 📊 EPC Current C

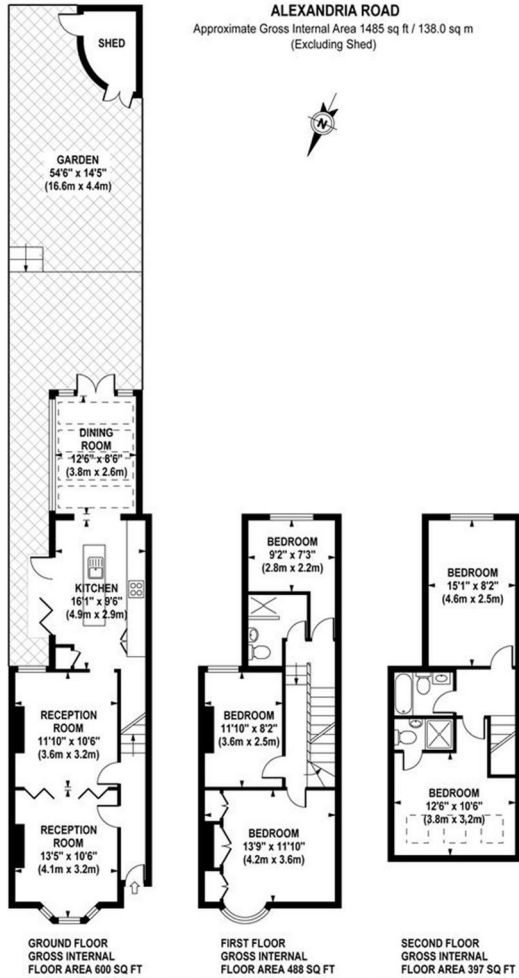
Terraced House - Five Bedrooms - Two Reception Rooms - Kitchen with Integrated Appliances - Well Maintained Garden - Beautiful Period Features - Part Furnished - Available End of July 2023.

A beautifully presented terraced family house on a popular residential road in Ealing. With mass amounts of natural light and space throughout, the property is placed over three floors and has a front reception room with a charming bay window and period fireplace, a dining room, a fully equipped kitchen with integrated appliances, a breakfast bar and access to the large conservatory and well maintained rear garden with a decked area and storage shed. The first floor of the property has three double bedrooms and a bathroom, with a further two double bedrooms on the second floor, along with a family bathroom and an additional en suite shower room. Further benefits include ample storage space throughout, attractive period features and gas central heating. Offered to the market part furnished.

Alexandria Road is ideally located for access to both West Ealing and Drayton Green mainline stations, as well as the beautiful open spaces of Walpole and Lammas Parks. There are numerous local shops, cafes and restaurants in the area, including the popular Waitrose supermarket.



- Terraced House
- Two Reception Rooms
- Well Maintained Garden
- Holding Deposit: £692.00 (1 weeks rent)
- Long Let (12 months+)
- Five Bedrooms
- Kitchen with Integrated Appliances
- Beautiful Period Features
- Security Deposit: £3,461.54
- Council Tax Band: E



Although every attempt has been made to ensure accuracy, all measurements are approximate.
The floor plan is for illustrative purposes only and not to scale. Measured in accordance to RICS standards.
DE-PHOTOGRAPHY.NET

