



HELLIWELL & CO
ESTATE AGENTS

Ealing Road, Brentford, TW8
£1,450 Per Calendar Month





🛏️ 1 Bedrooms | 🚗 1 Receptions | 🚿 1 Bathrooms | 📊 EPC Current C

Bright and Spacious – Purpose Built Apartment – Luxurious Development – Large Double Bedroom – Modern Open Plan Living – Integrated Appliances - Secure Underground Parking.

Placed within this prestigious purpose built development, this bright and spacious apartment is offered to the market furnished and is available now. The property has a large open plan reception room with modern integrated appliances and direct access to the private balcony, a double bedroom with floor to ceiling windows and a trendy bathroom. Further benefits include ample storage space, attractive wooden flooring, a secure underground parking space and access to the on-site private gym.



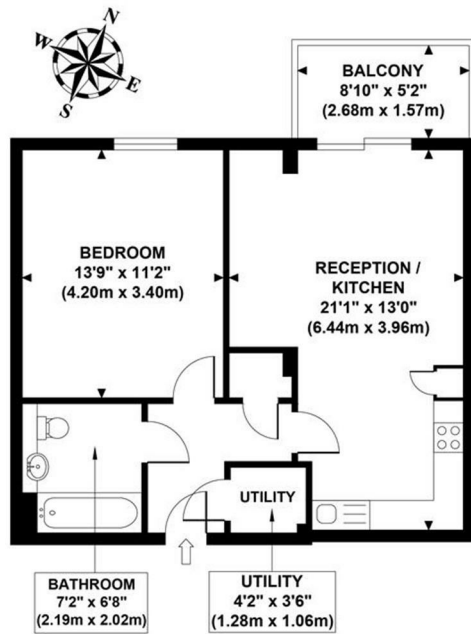
The apartment sits in the award winning Great West Quarter in Brentford. There is easy access to London via the M4/A4, and to the west of England and Heathrow via the M4. Kew Bridge rail station gives fast access to Clapham Junction and Waterloo, and this route intersects with the Underground (Victoria Line) at Vauxhall. On site there is a bus stop (route 235) and a Sainsbury's Local.

- Bright and Spacious
- Luxurious Development
- Modern Open Plan Living
- Secure Underground Parking
- Numerous Transport Links
- Purpose Built Apartment
- Large Double Bedroom
- Integrated Appliances
- Ample Storage

HELLIWELL & CO.

LAVAL HOUSE

Approximate Gross Internal Area
520 sq ft / 48.30 sq m



NINTH FLOOR
GROSS INTERNAL
FLOOR AREA 520 SQ FT

Although every attempt has been made to ensure accuracy, all measurements are approximate and no responsibility is taken for any error, omission, or mid-statement. This floor plan is for illustrative purposes only and not to scale. Measured in accordance to RICS standards.

