







🛏️ 3 Bedrooms | 🛋️ 1 Reception | 🚿 3 Bathrooms | 📊 EPC Current B

Opulent three bedroom, three bathroom apartment with three private balconies located in the highly sought after Dickens Yard development.

The apartment has an impressive open plan reception room/kitchen with integrated appliances and ample space for dining and entertaining, master bedroom with built in wardrobes, ensuite bathroom and a walk-in wardrobe, two further double bedrooms, one of which has a contemporary ensuite, and an additional family bathroom. Further benefits include three balconies with stunning views, 24 hour concierge, an onsite gym, swimming pool and spa.

Skyline House is excellently located for access to Ealing Broadway's tube station (Central and District lines, mainline and future Crossrail), shopping centre and multiple local shops, bars and restaurants. The beautiful open spaces of both Lammas and Walpole parks are also close by.

Tenure: Leasehold

Service charge: £9,200.00 per annum approx., reviewed biannually

Ground rent: £400 per annum approx., reviewed biannually

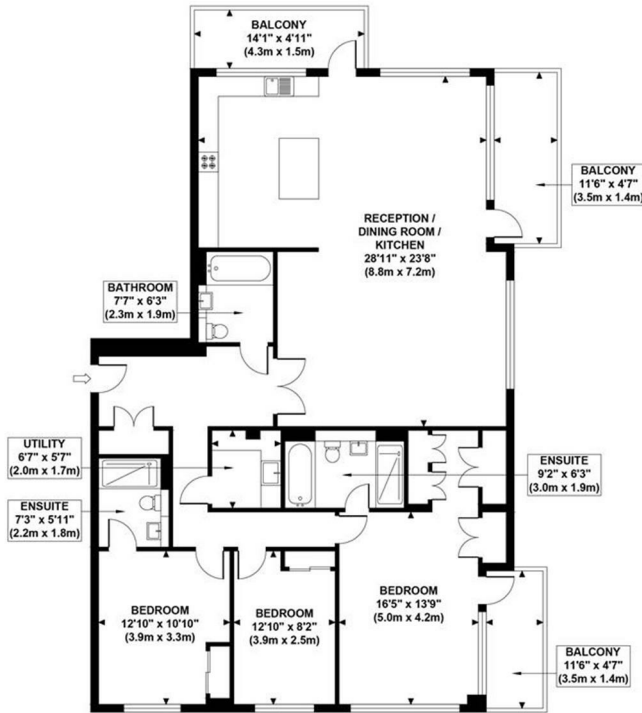
Council tax band: G

- Prestigious development
- Three bathrooms
- Open plan reception / kitchen
- 24 hour concierge
- Three private terraces
- Three double bedrooms
- Underfloor heating
- Stunning views
- Onsite gym, pool & spa

HELLIWELL & CO.

SKYLINE HOUSE

Approximate Gross Internal Area
1521 sq ft / 141.30 sq m



Although every attempt has been made to ensure accuracy,
all measurements are approximate and no responsibility is taken for any error, omission, or mid-statement.
This floor plan is for illustrative purposes only and not to scale. Measured in accordance to RICS standards.

