



**HELLIWELL & Co.**

**St Marys Place, Ealing, W5**

**Asking Price £870,000**









 3 Bedrooms
 | 
  2 Receptions
 | 
  2 Bathrooms
 | 
  EPC Current E

A beautiful three bedroom end of terrace Victorian cottage, located within a charming cul-de-sac in Olde Ealing.

The generous reception room leads through to a kitchen/dining area with wooden flooring, downstairs shower room with a high-pressure rainfall shower and ground floor bedroom or office, which opens out onto the gorgeous rear garden with patio & lawn area. On the first floor there are two double bedrooms with ample storage space and a family bathroom. Further benefits include well maintained front and rear gardens, excellent loft storage and private entrance on Beaconsfield Road that leads directly into the rear garden, offering additional parking options.

St Mary's Place is conveniently positioned for access to South Ealing (Piccadilly line) and Ealing Broadway (District and Central lines, mainline and future Crossrail) tube stations, as well as a variety of bus routes. Ealing Broadway's shopping centre, bars and restaurants are also easily accessible, along with the beautiful Walpole and Lammas Parks and several local independent cafes and boutiques. There is also a wide variety of schools, all offering exemplary reputations.

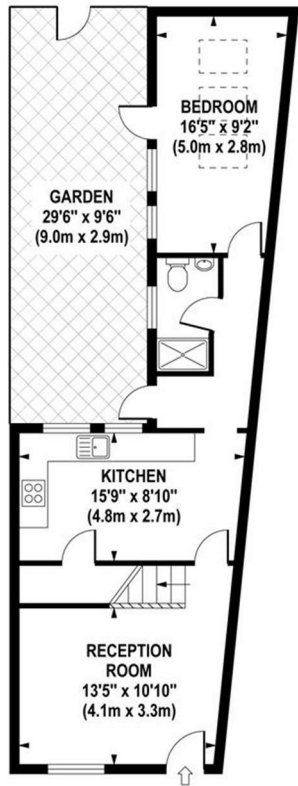
- Victorian Cottage
- End of Terrace
- Three Bedrooms
- Integrated Appliances
- Attractive Wooden Flooring
- Period Features
- Cul-de-Sac
- Multiple Transport Links
- Local Shops, Cafes and Restaurants
- Council Tax Band F



# HELLIWELL & Co.

+ 44 (0) 20 8799 3812

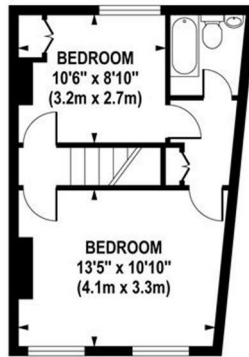
[sales@helliwellandco.com](mailto:sales@helliwellandco.com)



GROUND FLOOR  
GROSS INTERNAL  
FLOOR AREA 558 SQ FT

## ST. MARY'S PLACE

Approximate Gross Internal Area 893 sq ft / 83.0 sq m



FIRST FLOOR  
GROSS INTERNAL  
FLOOR AREA 335 SQ FT

Although every attempt has been made to ensure accuracy, all measurements are approximate.  
The floor plan's for illustrative purposes only and not to scale. Measured in accordance to RICS standards.

