







 2 Bedrooms |  1 Receptions |  1 Bathrooms |  EPC Current C

Gated Development – Purpose Built Block – Two Bedrooms – Open Plan Living – Balcony – Allocated Parking Space – Lift – Well Maintained Communal Areas – Furnished - Available July 2022.

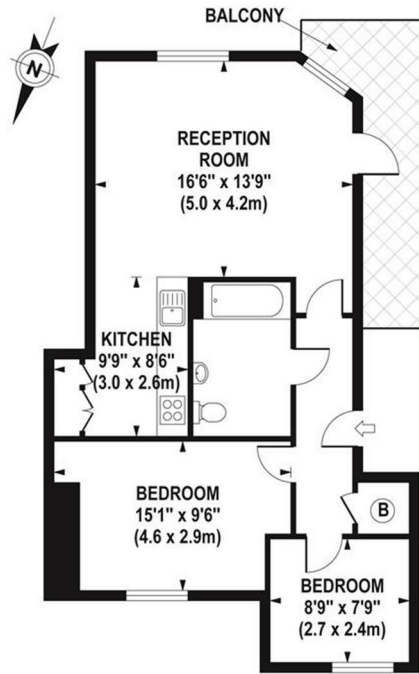
With mass amounts of natural light and space throughout, this well maintained purpose built apartment is located within a modern gated development and is offered to the market furnished. The property has a large reception room with a semi-open plan kitchen featuring integrated appliances and space for dining, two double bedrooms and a fully tiled bathroom. Further benefits include a large balcony, an allocated parking space and a lift.

Situated on a popular residential road, the property has numerous local shops, cafes and restaurants in the area, whilst also being ideally located for access to Hanwell mainline station. There are numerous open green spaces within the vicinity in addition to multiple transports links leading through to Ealing Broadway.

- Gated Development
- Bright and Spacious
- Modern Open Plan Living
- Allocated Off Street Parking
- Available July 2022
- Purpose Built Block
- Two Double Bedrooms
- Integrated Appliances
- Useful Lift

DIAMOND COURT

Approximate Gross Internal Area 644 sq ft / 59.8 sq m



**SECOND FLOOR
GROSS INTERNAL
FLOOR AREA 644 SQ FT**

Although every attempt has been made to ensure accuracy, all measurements are approximate. The floor plan's for illustrative purposes only and not to scale. Measured in accordance to RICS standards.

