







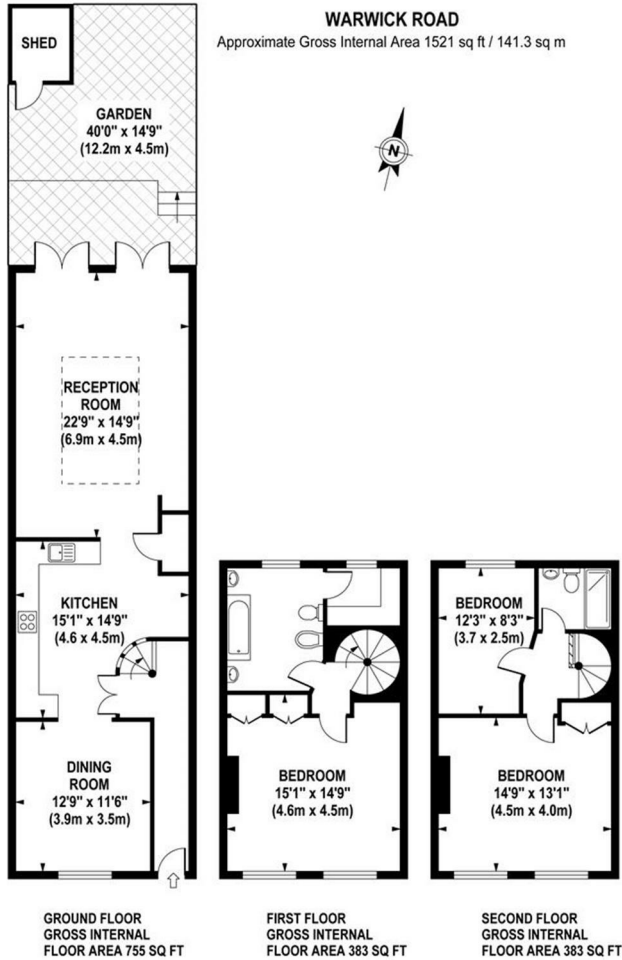
🛏️ 3 Bedrooms | 🛋️ 2 Receptions | 🚿 2 Bathrooms | 📊 EPC Current D

Over 1,500 SQ.FT. - 1850's Georgian Style Home - Modern and Stylish Terraced House - Three Bedrooms - Period Charm and Character - Ample Storage - Furnished / Unfurnished.

Situated in a beautiful residential area in Ealing, this stunning 1850's Georgian style family house which has been extensively refurbished, whilst still retaining its unique period features, including picturesque fireplaces and high ceilings, measures over 1,500sq.ft. and is laid over three floors. Entering through the receiving hallway, the property leads through to a large dining room with a stylish open plan kitchen featuring integrated appliances and a reception room with direct access to the private well maintained garden. The first and second floors of this bright and spacious terraced house offers a master bedroom with built in wardrobes, two further bedrooms, a family bathroom, a shower room and an additional utility room. With attractive period features throughout, the property further benefits from bespoke wooden flooring (made from reclaimed Jarrah railway sleepers), ample storage space and is offered to the market furnished or unfurnished. Available from end of July 2022.

Warwick Road is in a very prestigious area of Ealing, as it is on the same road as The University of West London, and within a beautiful neighbourhood in its own right. With Ealing Green, South Ealing Road Park, and Walpole Park within half a mile, this house is spoilt for choice when it comes to green spaces. Ealing Broadway's bars, shops, and restaurants are conveniently positioned, as are a range of exceptional schools for every age. A comprehensive selection of transport links makes this property ideal for professionals - with Central, District and GWR lines from Ealing Broadway, and South Ealing Station's Piccadilly Line, and the local bus network, travel in and around London is quick and easy.

- Unique and Stylish Family House
- Period Charm and Character
- Three Bright Bedrooms
- Beautiful Private Garden
- Available End of July 2022
- 1850's Georgian Property
- Original Fireplaces and High Ceilings
- Ample Storage
- Furnished / Unfurnished



Although every attempt has been made to ensure accuracy, all measurements are approximate. The floor plan's for illustrative purposes only and not to scale. Measured in accordance to RICS standards.

