



HELLIWELL & Co.

Hillcrest Road, Ealing, W5

Asking Price £579,950





 2 Bedrooms |  1 Receptions |  2 Bathrooms |  EPC Current C

Helliwell & Co is proud to present this hugely expansive two bedroom apartment with private west-facing balcony and allocated undercover parking space, surrounded by beautiful communal grounds that lead into Hanger Hill Park.

Located on the first floor (with lift) of this well maintained development, the property boasts an immense 25 foot long reception room with dual aspect windows and sliding doors out to the private balcony with amazing views of the communal gardens and park lands beyond, modern fitted kitchen, two double bedrooms with built in wardrobes, a family bathroom with bath and shower and additional W/C. Further benefits include newly double-glazed wall-to-wall windows throughout and a lockable private storage building.

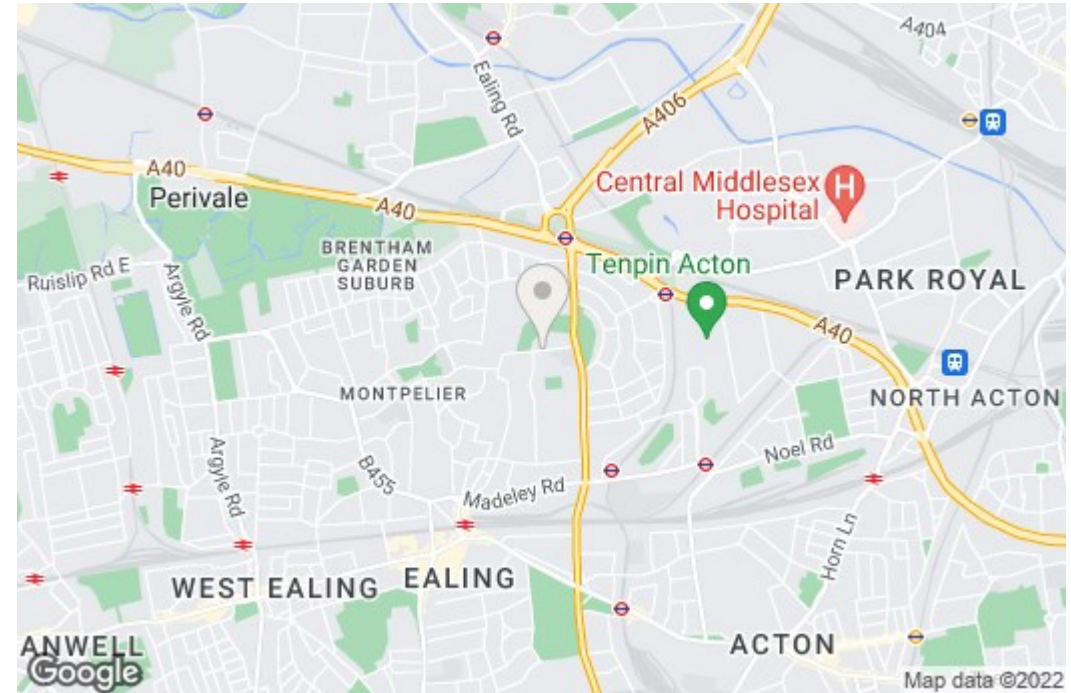
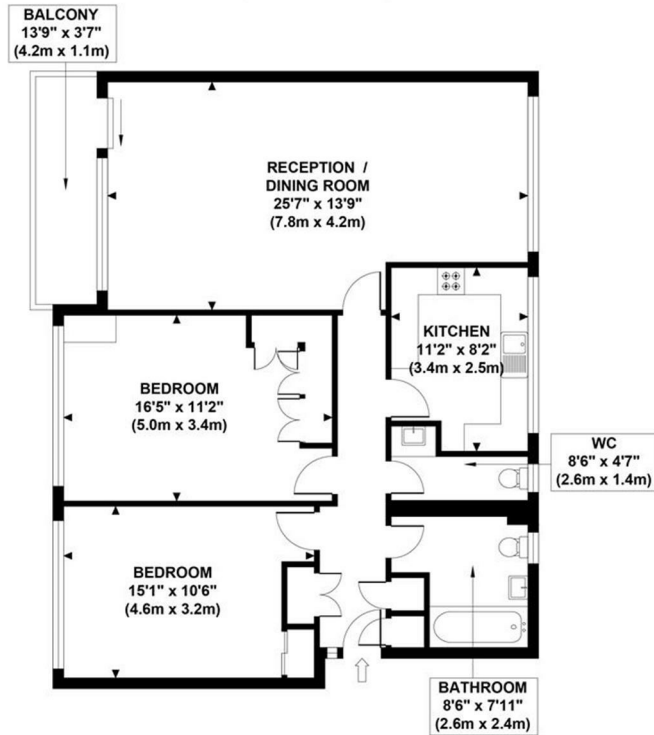
Situated in the sought after leafy Hanger Hill area, there are a selection of exceptional schools nearby and excellent transport links with easy access to North Ealing (Piccadilly) and Ealing Broadway (Central, District, GWR & Crossrail) Tube Stations as well as a number of bus routes. Ealing Broadway shopping centre is also easily accessible, offering a wide range of shops, bars and restaurants.

- Huge first floor apartment
- Wall-to-wall windows throughout
- Large private balcony
- Allocated sheltered parking
- Private bike store
- Beautiful communal gardens
- Desirable development with lift
- Great transport links & school catchment



MARCOURT LAWNS

Approximate Gross Internal Area
973 sq ft / 90.40 sq m



SECOND FLOOR
GROSS INTERNAL
FLOOR AREA 973 SQ FT

Although every attempt has been made to ensure accuracy,
all measurements are approximate and no responsibility is taken for any error, omission, or mid-statement.
This floor plan is for illustrative purposes only and not to scale. Measured in accordance to RICS standards.