



**HELLIWELL & Co.**

**Adelaide Road, Ealing, W13**

**Asking Price £819,950**









 3 Bedrooms |  1 Receptions |  2 Bathrooms |  EPC Current D

Gorgeous red brick Victorian terraced home with three double bedrooms and west facing rear garden, located on a beautiful tree-lined street.

The property consists of: entrance hallway with charming Victorian chequered floor tiles, large double reception room with bay window and feature fireplace, utility room, downstairs W/C and kitchen with dining area and French doors leading out to the private low maintenance rear garden. Upstairs there are three double bedrooms and a family bathroom with bath & shower. There is also the potential to extend the loft STPP.

Northfield Avenue is a short walk away, boasting an abundance of boutiques, cafés, restaurants, wonderful parks and Northfields Tube Station (Piccadilly Line). West Ealing Station (Nation Rail / Crossrail) and Ealing Broadway (Central Line, District Line and National Rail / Crossrail) are within easy reach, as well as excellent bus and cycle routes.

- Victorian terraced property
- Three double bedrooms
- West facing rear garden
- Double reception room
- Utility & downstairs W/C
- Potential to extend STPP
- Popular Northfields location
- Great transport links



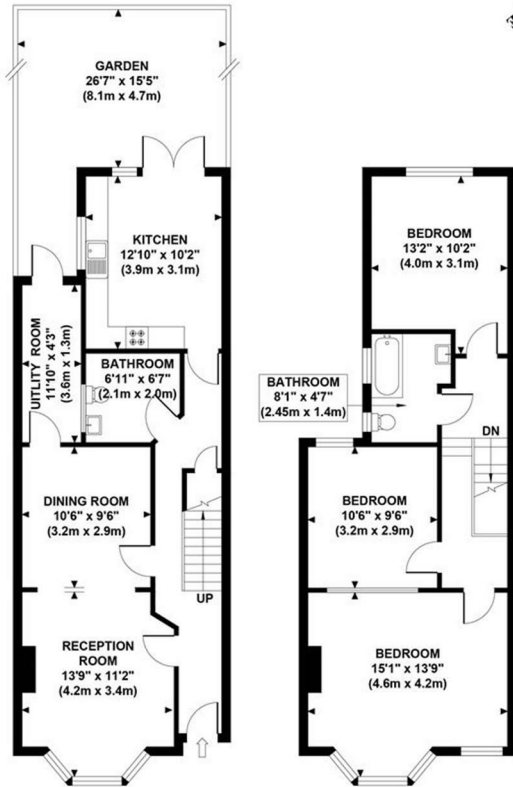
**HELLIWELL & Co.**

+ 44 (0) 20 8799 3812

sales@helliwellandco.com

**ADELAIDE ROAD**

Approximate Gross Internal Area  
1176 sq ft / 109 sq m



**GROUND FLOOR**  
GROSS INTERNAL  
FLOOR AREA 618 SQ FT

**FIRST FLOOR**  
GROSS INTERNAL  
FLOOR AREA 558 SQ FT

Although every attempt has been made to ensure accuracy,  
all measurements are approximate and no responsibility is taken for any error, omission, or mid-statement.  
This floor plan is for illustrative purposes only and not to scale. Measured in accordance to RICS standards.

