



HELLIWELL & Co.

Hanger Green, Ealing, W5
Asking Price £499,950





 2 Bedrooms |  1 Receptions |  2 Bathrooms |  EPC Current C

Helliwell & Co is proud to present this spacious two double bedroom, two bathroom apartment in excellent condition located on the first floor of a sought-after development on the Haymills borders in W5.

Offered with Share of Freehold, the property has a large reception room perfect for entertaining, well-equipped separate kitchen, generous double bedroom with built-in storage and en-suite bathroom, second double bedroom, family bathroom and well maintained communal gardens. Further benefits include allocated off street parking, new double-glazed windows and wooden flooring throughout.

Hanger Court, situated on Hanger Green is ideally located for access to both Hanger Lane (Central Line) and Park Royal (Piccadilly Line) tube stations, as well as Ealing Broadway's station (Central and District Lines, mainline and future Crossrail), shopping centre, local shops, restaurants and bars. The open spaces of Hanger Hill and Pitshanger Park are also nearby.

Tenure: Share of Freehold

Lease length: 95 years remaining approx.

Service charge: £2,400.00 per annum approx.

Ground rent: £100 per annum approx.

Council tax band: D

- Two double bedrooms
- Two bathrooms
- Allocated parking space
- Share of Freehold
- Attractive communal grounds
- Over 800 sq ft
- Enviably school catchment
- Fantastic transport links
- Built in storage



HELLIWELL & Co.

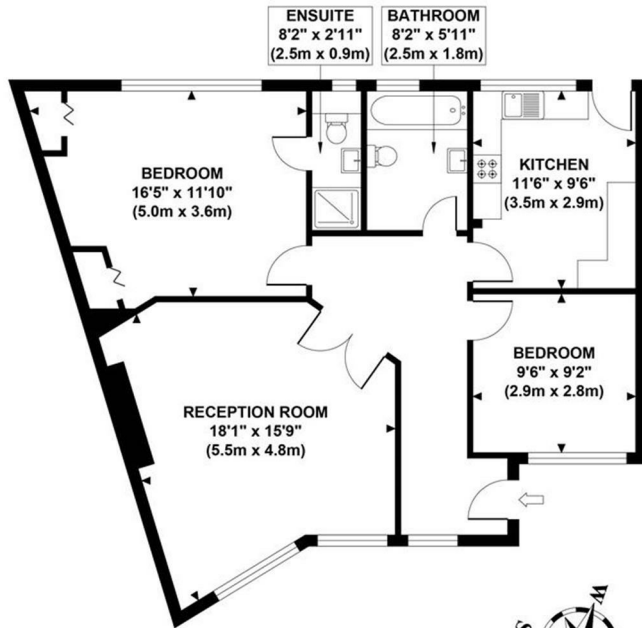
+ 44 (0) 20 8799 3812

sales@helliwellandco.com

Helliwell & Co.

HANGER COURT

Approximate Gross Internal Area
800 sq ft / 74.30 sq m



**FIRST FLOOR
GROSS INTERNAL
FLOOR AREA 800 SQ FT**



Although every attempt has been made to ensure accuracy,
all measurements are approximate and no responsibility is taken for any error, omission, or mid-statement.
This floor plan is for illustrative purposes only and not to scale. Measured in accordance to RICS standards.

