



HELLIWELL & Co.

Alton Court, Hanwell, W7

Asking Price £385,000





🏠 1 Bedrooms | 🛋️ 1 Receptions | 🚿 1 Bathrooms | 📊 EPC Current B

Beautiful one bedroom apartment with private balcony and parking, situated in a modern gated development.

Located on the first floor of this lift serviced building, this expansive apartment, offering over 550 sq ft of luminous, high-spec accommodation, comprises; entrance hallway with built in storage, generous open plan kitchen / living area with integrated appliances, private balcony, double bedroom with built in wardrobes and luxurious bathroom with bath & shower. Further benefits include secure video entry system, off street parking and well maintained communal gardens.

Alton Court is well located for access to Castle Bar Park station (National Rail & future Crossrail) and boasts excellent links for motorists and cyclists. Pitshanger Lane is within walking distance and hosts a range of boutiques, cafes, restaurants and shops - including a local fishmonger, butchers and grocers. There is also an abundance of open green spaces and local parks.

- Secure gated development
- One bedroom apartment
- Private balcony
- Off street parking
- Over 550 sq. ft.
- Video entry phone system
- Communal gardens
- Great location



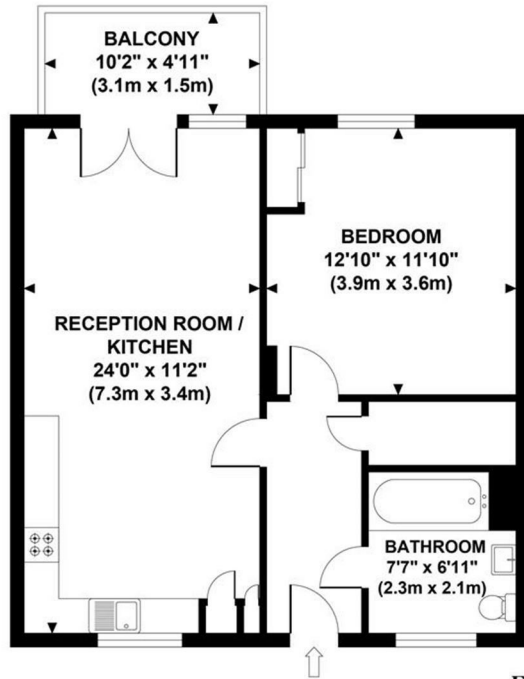
HELLIWELL & Co.

+ 44 (0) 20 8799 3812

sales@helliwellandco.com

ALTON COURT

Approximate Gross Internal Area
558 sq ft / 51.80 sq m



**FIRST FLOOR
GROSS INTERNAL
FLOOR AREA 558 SQ FT**



Although every attempt has been made to ensure accuracy, all measurements are approximate and no responsibility is taken for any error, omission, or mid-statement. This floor plan is for illustrative purposes only and not to scale. Measured in accordance to RICS standards.