









🛏️ 2 Bedrooms | 🛋️ 1 Receptions | 🚿 1 Bathrooms | 📊 EPC Current D

First Floor Maisonette – Recently Refurbished (photos are from before refurbishment) - Own Private Entrance – Two Double Bedrooms – Private Share of Garden – Double Glazing - Quiet Residential Street – Great Location.

Placed within a quiet residential area of Ealing, this beautifully presented first floor maisonette features stunning high ceilings and an abundance of natural light and space throughout. Entering through its own private entrance, the property boasts a spacious reception room, with a charming fireplace and bay window feature, a modern kitchen equipped with integrated appliances including a stylish farmhouse sink and wooden worksurfaces, two good sized double bedrooms and a contemporary bathroom with clawfoot bathtub. Further features include a private share of garden, double glazing, and is available beginning of October 2022.

Waldemar Avenue is perfectly located just moments away from the beautiful leafy green open spaces of Walpole and Lammas Park. The area offers great transport links, with South Ealing (Piccadilly Line) tube station close by and Ealing Broadway station (Central, District, National Rail and future Crossrail) and popular shopping centre is just under a mile away, providing a variety of local shops, cafes, bars and restaurants.

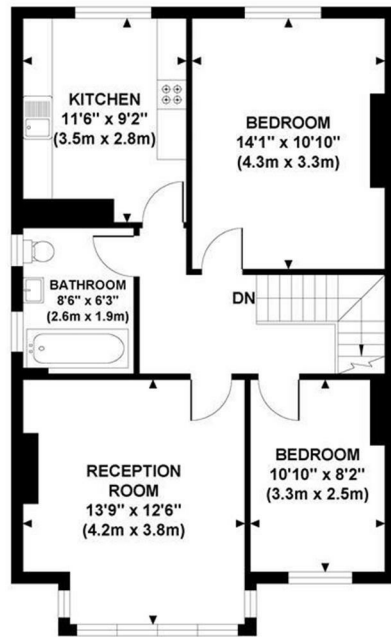
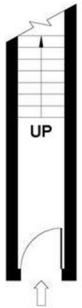
- First Floor Maisonette
- Own Private Entrance
- Private Share of Garden
- Deposit: £2192.30
- Long Term (12-24 months+)
- Recently Refurbished
- Two Double Bedrooms
- Double Glazing
- Council Tax Band: D
- Great Location



HELLIWELL & CO.

## WALDEMAR AVENUE

Approximate Gross Internal Area  
700 sq ft / 65.0 sq m



**GROUND FLOOR**  
GROSS INTERNAL  
FLOOR AREA 37 SQ FT

**FIRST FLOOR**  
GROSS INTERNAL  
FLOOR AREA 663 SQ FT

Although every attempt has been made to ensure accuracy, all measurements are approximate and no responsibility is taken for any error, omission, or mid-statement. This floor plan is for illustrative purposes only and not to scale. Measured in accordance to RICS standards.

