



HELLIWELL & CO
ESTATE AGENTS

The Green, Ealing, London
Offers In Excess Of £500,000





 2 Bedrooms |  1 Receptions |  1 Bathrooms |  EPC Current C

Helliwell & Co is proud to present a rare opportunity to acquire this stunning two-bedroom apartment in the beating heart of Ealing Broadway, with fabulous views of Ealing Green.

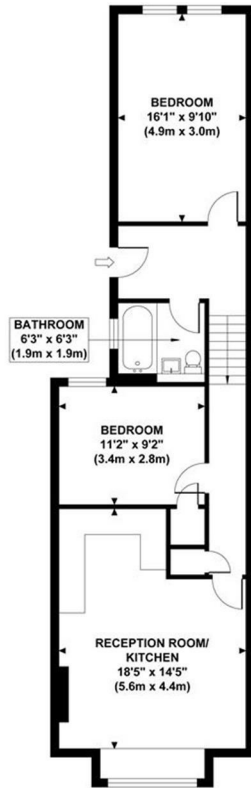
The unique apartment comprises two double bedrooms, contemporary bathroom, semi open-plan kitchen with integrated appliances, and a generous, luminous lounge with high quality wooden flooring and gorgeous feature window boasting spectacular views. Further benefits include private entrance, ample storage, residents permit parking, a long lease and low service charge.

The Green is a wonderful location, moments from a variety of bistros, cafes, bars and boutiques, as well as Ealing Broadway's popular shopping precinct and train station (Elizabeth Line, Central Line, District Line, GWR). Ealing Green and Walpole Park are on the doorstep, perfect for picnics in the summer and brisk walks in the winter.

- Wonderful Two Bedroom Apartment
- Staggering Views Across Ealing Green
- Perfect Buy to let
- Ground Rent: £250 (Review: 2031)
- Council Tax Band: D
- Envious Location
- Private Entrance
- Leasehold: 111 Years
- Service Charge: £611 (Review: 2031)

THE GREEN

Approximate Gross Internal Area
694 sq ft / 64.5 sq m



**FIRST FLOOR
GROSS INTERNAL
FLOOR AREA 694 SQ FT**

Although every attempt has been made to ensure accuracy, all measurements are approximate and no responsibility is taken for any error, omission, or mid-statement. This floor plan is for illustrative purposes only and not to scale. Measured in accordance to RICS standards.

