



HELLIWELL & Co.

Hamilton Road, Ealing, W5
Asking Price £999,950





🏠 3 Bedrooms | 🛋️ 2 Receptions | 🚿 2 Bathrooms | 📊 EPC Current C

Situated on the first floor of this beautiful period property, this luminous and expansive conversion flat is offered to the market with a share of freehold and has no onward chain. Offering 1300 SQ FT of living space throughout, this impressive property includes a generous reception room with impressively high ceilings and a period fireplace, a second reception room, three double bedrooms, one of which benefits from an en suite shower room and built-in wardrobes, a fully fitted kitchen with integrated appliances and a family bathroom. Further benefits include gas central heating and double glazing.

Located on the popular Hamilton Road in Ealing Broadway, the property is ideally located for access to both Ealing Broadway (Central and District lines, Mainline and Crossrail) and Ealing Common (District and Piccadilly lines) tube stations, as well as the beautiful open space of Ealing Common. There are multiple local shops, cafes and restaurants nearby, including the bustling Ealing Broadway shopping centre.

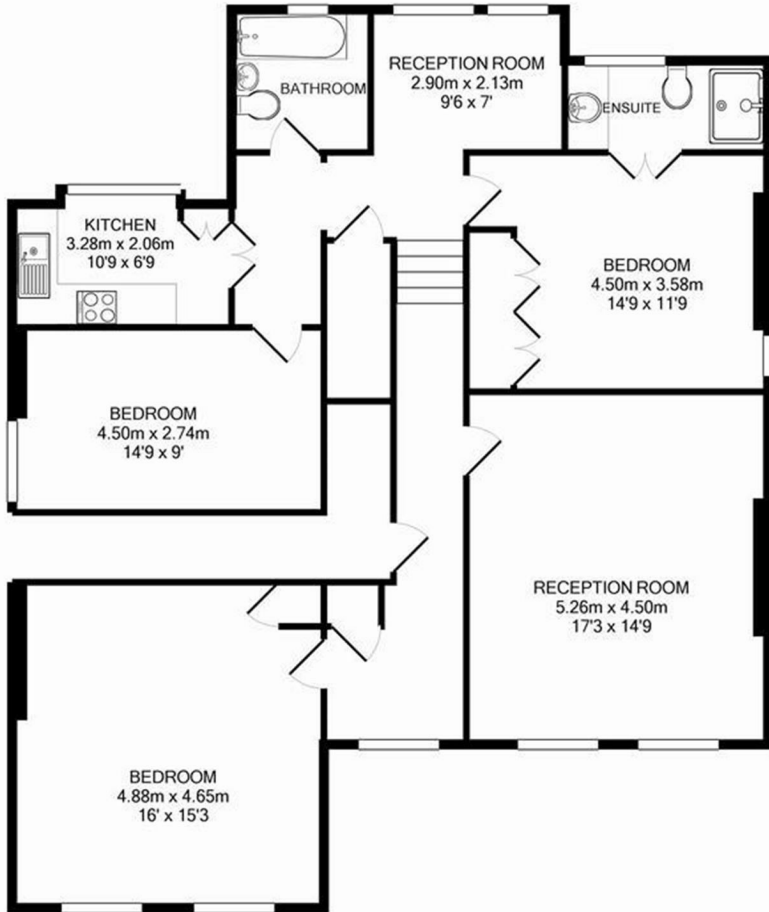
- Stunning First Floor Flat
- Circa 1300 SQ FT
- Share of Freehold
- Period Charm and Character
- Three Double Bedrooms
- Two Reception Rooms
- No Onward Chain
- Fantastic Central Location



HELLIWELL & Co.

+ 44 (0) 20 8799 3812

sales@helliwellandco.com



Total Approx. Floor Area 120.4 Sq.M. (1296 Sq.Ft.)
Measurements are approximate. Not to scale. Illustrative purposes only
Made with Metropix ©2016

