







🏠 1 Bedrooms | 🛋️ 1 Receptions | 🚿 1 Bathrooms | 📊 EPC Current D

Ground Floor Period Conversion – Private Entrance – Bright and Spacious Open Plan Living – Large Double Bedroom – Integrated Appliances – Private Outdoor Space – Unfurnished – Available Now

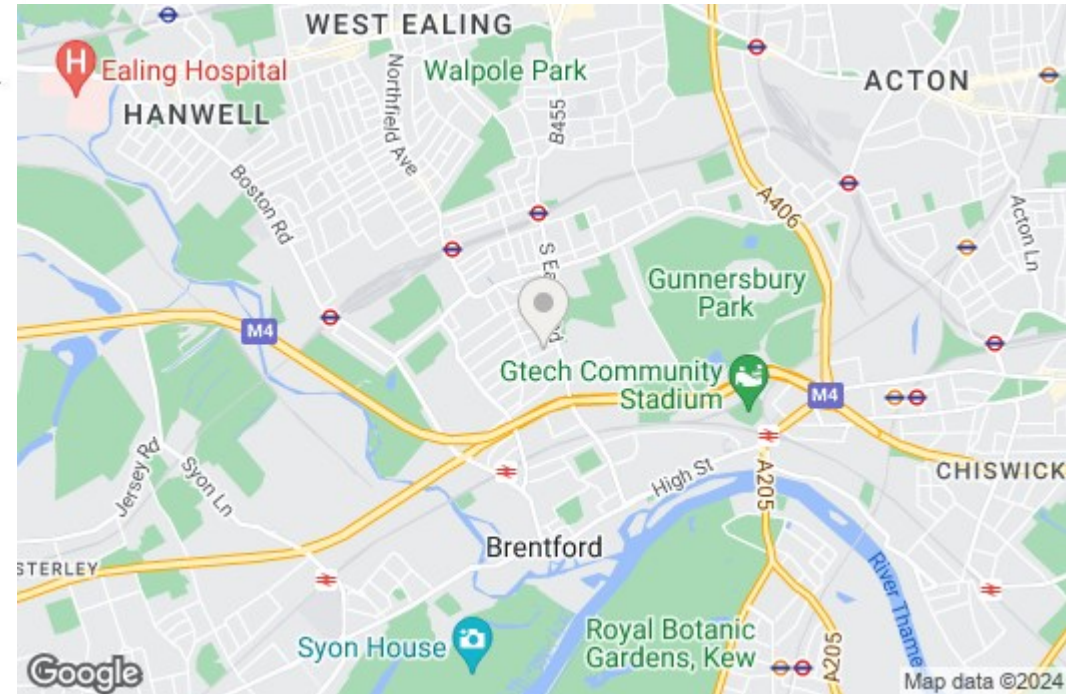
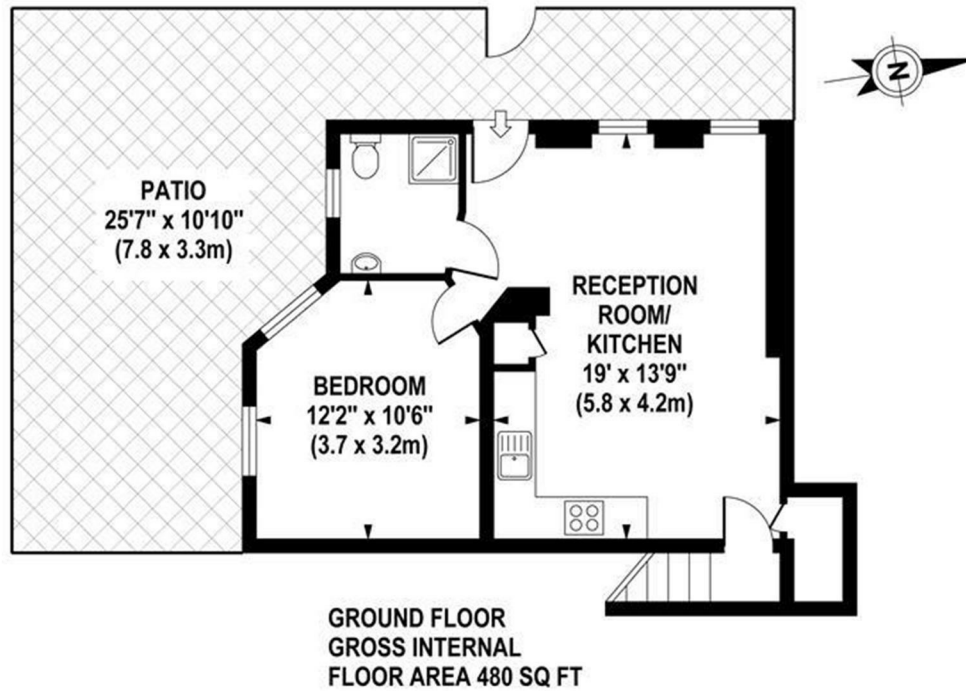
Benefiting from its own private entrance and with an abundance of natural light and space throughout, this contemporary ground floor conversion flat has been redecorated throughout and is offered to the market in excellent condition. The property has a large open plan living area with a kitchen featuring modern, integrated appliances and space for dining, a double bedroom with newly fitted carpets, and a stylish shower room. Further features include private outdoor space, attractive wooden flooring, gas central heating and is offered to the market furnished.

Whitestile Road is ideally located for access to both Northfield (Piccadilly) and Brentford (Overground) stations. There are also multiple local amenities close by, including popular shops, cafes, restaurants and bars.

- Private Entrance
- Recently Redecorated
- Bright Double Bedroom
- Holding Deposit: £369.00
- Council Tax Band: C
- Ground Floor Conversion
- Spacious Open Plan Living
- Modern Kitchen and Bathroom
- Deposit: £1846.15
- Long Let (12-24 months+)

WHITESTILE ROAD

Approximate gross area 480 sq ft /44.6 sq m



Although every attempt has been made to ensure accuracy, all measurements are approximate. The floor plan's for illustrative purposes only and not to scale. Measured in accordance to RICS standards.