



HELLIWELL & CO
ESTATE AGENTS

Argyle Road, Ealing, W13

Asking Price £399,950





 2 Bedrooms |  1 Receptions |  1 Bathrooms |  EPC Current C

Helliwell & Co is pleased to introduce this expansive two-bedroom ground floor apartment opposite Cleveland Park.

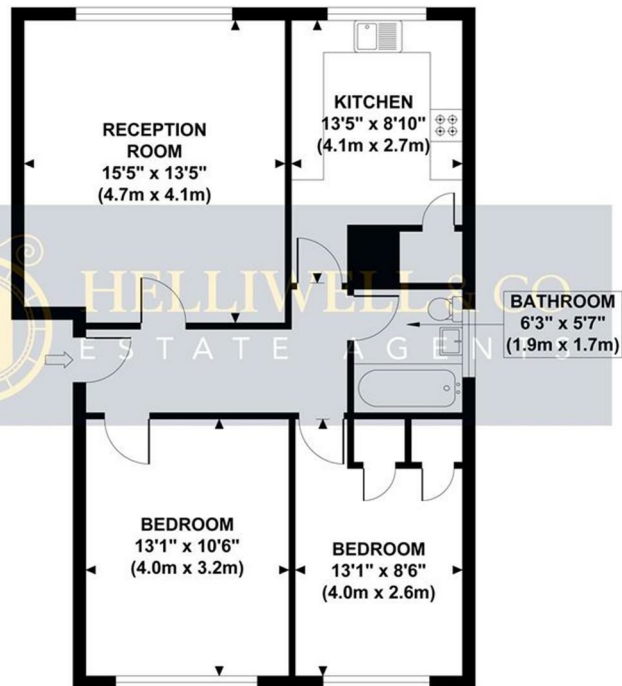
This lovely flat briefly comprises welcoming hallway with storage, generous lounge with views across the communal grounds, two double bedrooms looking out toward the park, fully tiled bathroom and well-equipped separate kitchen. Further benefits include gas central heating, double glazing, and off-street parking.

Long Acre Court is well located, surrounded by several beautiful parks, with easy access to the Elizabeth Line / Crossrail at West Ealing Station, and close to the award-winning Pitshanger Village with its abundance of boutiques, coffee houses, restaurants, famous Brentham club and sprawling park and golf course.

- Luminous Ground Floor Apartment
- Views Across Local Park
- Excellent Condition Throughout
- Ground Rent: £25 (Review: TBC)
- Council Tax Band: C
- Close to Elizabeth Line
- EPC Rating: C
- Leasehold: 103 Years
- Service Charge: £928 (Review: TBC)

LONG ACRE COURT

Approximate Gross Internal Area
695 sq ft / 64.56 sq m



Although every attempt has been made to ensure accuracy, all measurements are approximate and no responsibility is taken for any error, omission, or mid-statement. This floor plan is for illustrative purposes only and not to scale. Measured in accordance to RICS standards.