



HELLIWELL & CO
ESTATE AGENTS

Woodfield Road, Ealing, W5
Asking Price £1,750,000





🏠 5 Bedrooms | 🛋️ 3 Receptions | 🚿 4 Bathrooms | 📊 EPC Current D

Helliwell & Co is proud to present this staggeringly beautiful family home, situated on one of Ealing's most prestigious roads.

This freehold semi-detached house boasts beautiful Edwardian architecture, and offers buyers an opportunity to create and design their dream home. The expansive ground level consists of a stunning front reception with large bay window, luminous kitchen-dining area, two additional reception rooms and two guest WCs. Further benefits include original wooden flooring, high ceilings, charming fireplaces, a gorgeous rear garden and a driveway for multiple cars in addition to two off-street parking spaces offered as part of the sale.

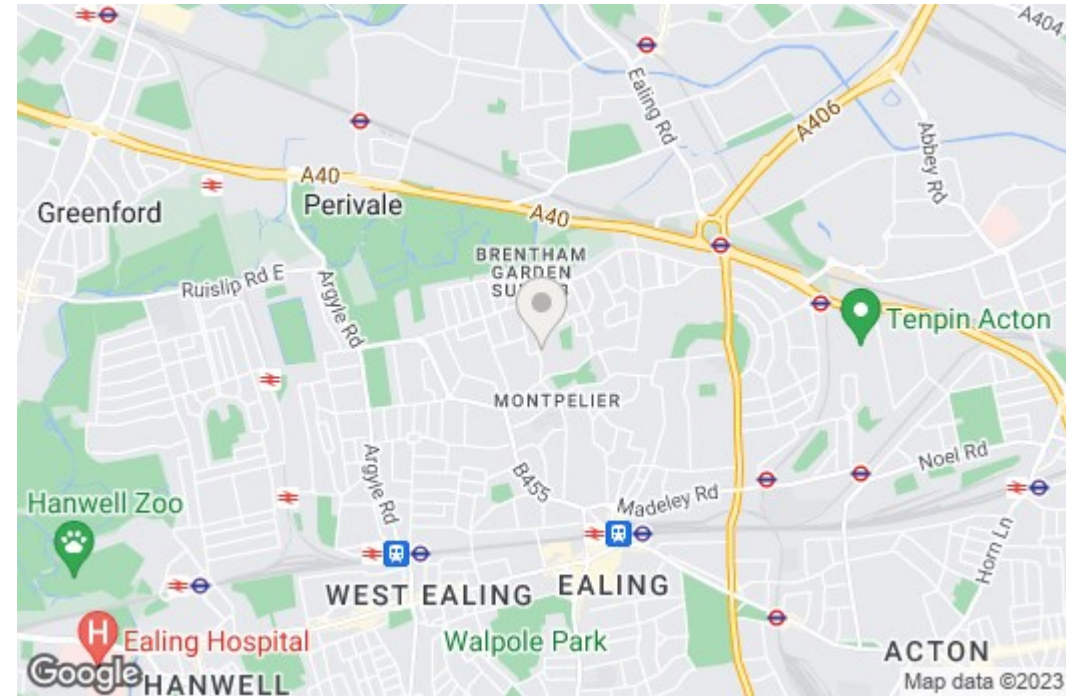
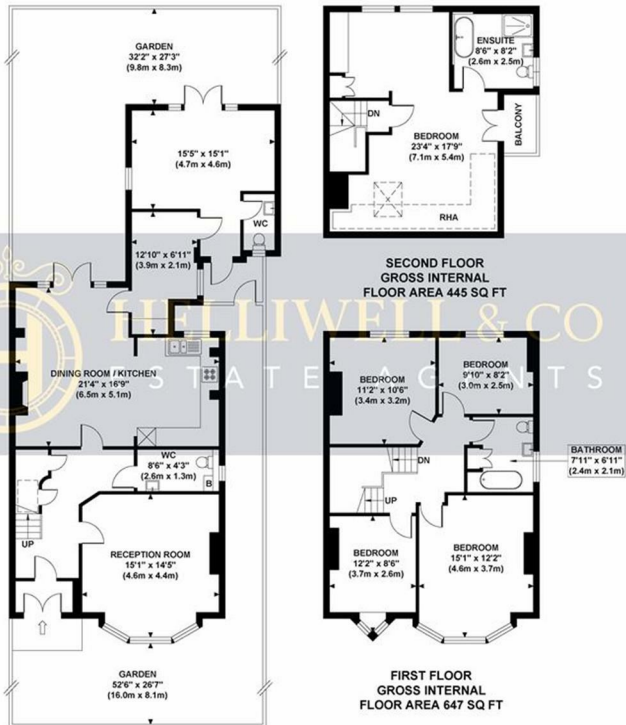
Winding up the beautiful wooden staircase, the first floor comprises four generous bedrooms and family bathroom, and the top floor hosts an immense master bedroom with dressing area, en-suite bathroom and unique sun terrace.

Woodfield Road is a highly sought-after, tree-lined street nestled perfectly between Ealing Broadway (Crossrail, Central Line, District Line & GWR) and the award-winning Pitshanger Village, each offering an abundance of wonderful eateries, boutiques, shops, bars, restaurants and beautiful parks. The house is moments from a variety of schools, all enjoying exemplary reputations, including St Benedict's, Notting Hill, Durstan House and several more.

- Stunning Semi-Detached House
- Beautiful Period Character
- Ample Off-Street Parking
- Circa 2100 SQ FT
- Fantastic Development Potential (STPP)
- Highly Desirable Road

WOODFIELD ROAD

Approximate Gross Internal Area
2078 sq ft / 192.9 sq m
(Including Reduced Height Area)



Although every attempt has been made to ensure accuracy, all measurements are approximate and no responsibility is taken for any error, omission, or mid-statement. This floor plan is for illustrative purposes only and not to scale. Measured in accordance to RICS standards.