



HELLIWELL & CO  
ESTATE AGENTS

Aspen Close, Ealing, W5  
£2,200 Per Calendar Month









 2 Bedrooms |  1 Receptions |  1 Bathrooms |  EPC Current C

Well Presented Terraced House – Quiet Cul-de-sac – Spacious Reception– Two Double Bedrooms – East Facing Private Garden – Permit Parking Available – Unfurnished – Great Location – Available June 2024.

Located in a quiet, residential cul-de-sac, this beautifully presented terraced house is offered to the market unfurnished and is available mid June 2024. Offering over 684 sq ft of living space and an abundance of natural light throughout, the property boasts a large kitchen/dining room, equipped with integrated appliances and stylish fittings and has been recently renovated, a spacious rear reception with attractive wooden flooring and floor to ceiling double doors, providing direct access to a private east facing garden. The first floor presents two good sized double bedrooms, both with fitted wardrobes and a contemporary family bathroom with bathtub and shower feature. The property further benefits from external storage space, an additional W/C on the ground floor, a well-maintained front garden and permit parking.

Aspen Close, is situated in a residential cul-de-sac in South Ealing, just moments away from the beautiful open spaces of Gunnersbury Park. The property offers great access to both South Ealing (Piccadilly Line) and Acton Town (Piccadilly and District Line) tube stations as well as convenient access to the A406, A4/M4 and the M40. There are a number of local shops, restaurants and pubs within the proximity and Ealing Broadway's Station (Central, District, National Rail and Elizabeth Line) and bustling shopping centre is approximately 1.2 miles away.

- Well-Presented Terraced House
- Spacious Reception
- East-Facing Private Garden
- Holding Deposit: £507.00 (1 week's rent)
- Council Tax Band D
- Quiet Cul-De-Sace
- Two Double Bedrooms
- Unfurnished
- Deposit: £2,538.46 (5 weeks' rent)
- Long Let (12-24 months+)

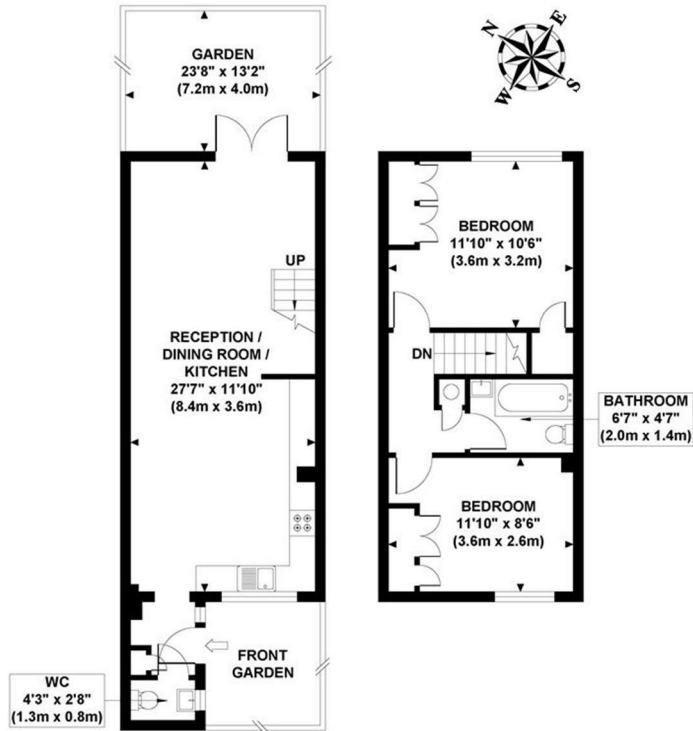


HELLIWELL & CO.

**ASPEN CLOSE**

Approximate Gross Internal Area

684 sq ft / 63.50 sq m



**GROUND FLOOR**  
GROSS INTERNAL  
FLOOR AREA 362 SQ FT

**FIRST FLOOR**  
GROSS INTERNAL  
FLOOR AREA 322 SQ FT



Although every attempt has been made to ensure accuracy, all measurements are approximate and no responsibility is taken for any error, omission, or mid-statement. This floor plan is for illustrative purposes only and not to scale. Measured in accordance to RICS standards.