



HELLIWELL & CO
ESTATE AGENTS

Woodstock Avenue, Northfields, W13

£2,450 Per Calendar Month





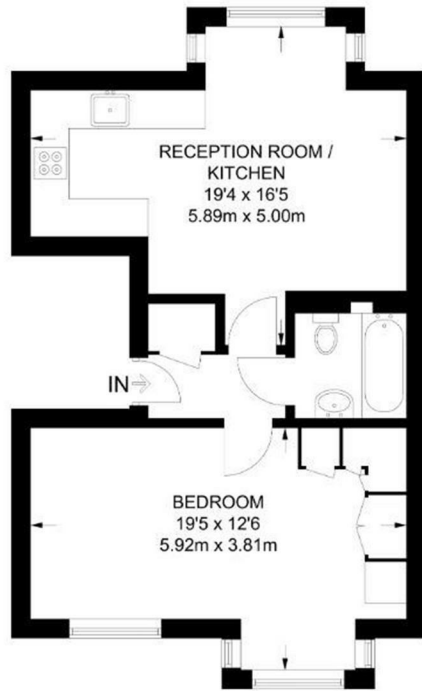
🛏 1 Bedrooms | 🛋 1 Receptions | 🚿 1 Bathrooms | 📊 EPC Current C

SHORT LET - Stunning period conversion flat offered on a short let tenancy basis and is available now. The property has been recently refurbished and is finished to a high standard with tasteful neutral decoration throughout.

Comprising of a generous open plan reception/kitchen with large bay window filling the room with natural light, a large double bedroom with ample built in wardrobes, and a contemporary family bathroom with bath and shower, chrome 'Grohe' fittings and designer tiles. The fully fitted kitchen has high spec integrated appliances and useful breakfast bar. Further benefits include beautiful herringbone flooring throughout with exception to the bedroom which is newly carpeted, a cleverly designed washer dryer cupboard and integrated media wiring for advanced home entertainment.

Situated on a highly sought after residential road, this beautiful home is a short walk from Northfields & Boston Manor Tube station (Piccadilly line) providing access in and out of London, a selection of local shops, cafes, and restaurants. The green spaces of Lammas and Elthorne parks are also nearby.

- Short Let
- Large Double Bedroom
- Newly Refurbished Throughout
- Lockable Bicycle Storage
- Deposit: £2826.92
- First Floor Flat
- Modern & Stylish Interior
- Close to Northfields Tube Station
- Ample storage
- Council Tax Band C



FIRST FLOOR

APPROXIMATE GROSS INTERNAL AREA
508 SQ FT / 47.2 SQ M

This plan has been drawn for illustrative and identification purposes only.

