



HELLIWELL & CO
ESTATE AGENTS

Welldon Crescent, Harrow, HA1
£1,250 Per Calendar Month





🛏️ 1 Bedrooms | 🛋️ 1 Receptions | 🚿 1 Bathrooms | 📊 EPC Current D

Conversion Flat – Top Floor – Spacious Double Bedroom – Open Plan Living – Bright and Airy Bathroom – Furnished – Available July 2023 - Residential Location.

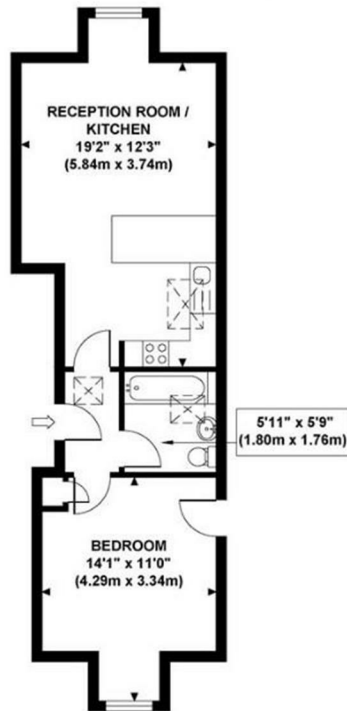
This bright and spacious, top floor conversion flat is offered to the market furnished and is available July 2023. The property has a large open plan living area with a kitchen featuring integrated appliances, a double bedroom, with useful eves storage and a bright and airy bathroom. Further benefits include a neutral décor throughout and ample storage space.

Situated in a popular residential area, Welldon Crescent is ideally located for access to both Harrow on the Hill (mainline) and West Harrow (Metropolitan line) stations, as well as the numerous local shops, cafes and restaurants in the area.

- Conversion Flat
- Spacious Double Bedroom
- Bright and Airy Bathroom
- Long Term (12 months+)
- Security Deposit: £1442.30
- Top Floor
- Open Plan Living
- Furnished
- Holding Deposit: £288.00 (1 weeks rent)
- Council Tax Band C

HELLIWELL & CO.

WELLDON CRESCENT
Approximate Gross Internal Area
426 sq ft / 39.60 sq m



**SECOND FLOOR
GROSS INTERNAL
FLOOR AREA 426 SQ FT**

Although every attempt has been made to ensure accuracy,
all measurements are approximate and no responsibility is taken for any error, omission, or mid-statement.
This floor plan is for illustrative purposes only and not to scale. Measured in accordance to RICS standards.

