







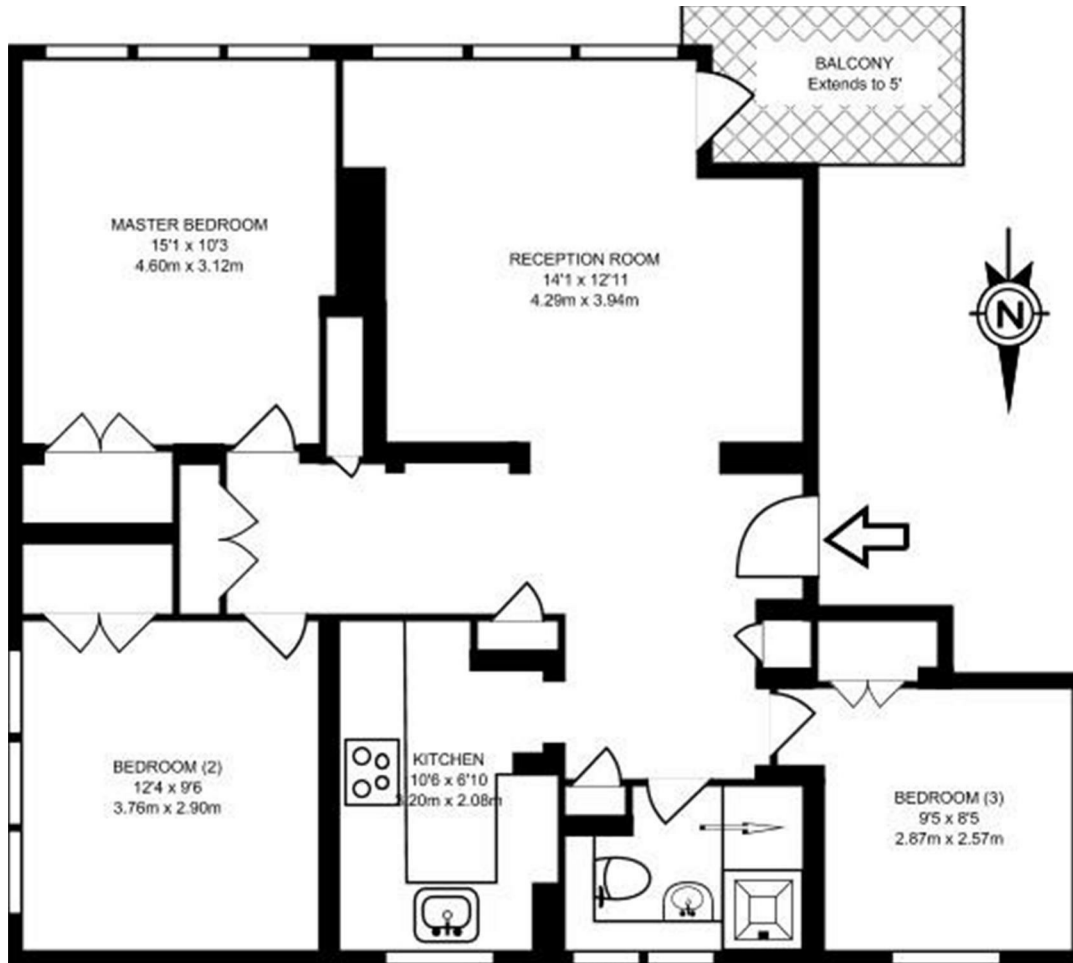
 3 Bedrooms |  1 Receptions |  1 Bathrooms |  EPC Current D

Bright and Spacious Flat – Large Reception – Three Double Bedrooms – Private Balcony – Double Glazing – Access to Communal Gardens - Off- Street Parking (first come first serve) – Furnished - Available July 2023.

Situated on a quiet residential road, this well presented flat is offered to the market furnished and is available July 2023. Bright and spacious throughout the property features a large reception with plenty of space for dining, a modern fitted kitchen, fully equipped with integrated appliances, three good sized double bedrooms, each with built in storage and a contemporary tiled bathroom. Further benefits include a private balcony, off-street parking and access to a communal garden.

Elizabeth Gardens is located on a quiet residential street and is within reach of all the amenities of The Vale and Uxbridge Road with Acton Central Station (Overground) close by offering multiple bus routes to central London and the popular Westfield Shopping Centre. The leafy green open spaces of Acton Park are also just under half a mile away.

- Bright and Spacious Flat
- Three Double Bedrooms
- Private Balcony
- Security Deposit: £2423.07
- Long Term (12-24 months+)
- Large Reception
- Separate Kitchen
- Access to Communal Gardens
- Holding Deposit: £484.00 (1 weeks rent)
- Council Tax Band C



SECOND FLOOR  
752 SQ FT/69.86 SQ M

