



HELLIWELL & CO
ESTATE AGENTS

Hanger Lane, Ealing, W5
£3,500 Per Calendar Month





🛏️ 5 Bedrooms | 🛋️ 1 Receptions | 🚿 2 Bathrooms | 📊 EPC Current D

Centrally Located – Bright and Spacious - Five Double Bedroom Flat – Modern Furnishings – Large Reception Room – Ideal for Professionals and Families – Ealing Broadway and North Ealing Tubes – Good Local Schools.

Situated in a popular residential location, this bright and spacious first floor flat is ideal for a group of young professionals. The property has five double bedrooms, a large reception room with a bay window, a modern kitchen with integrated appliances and a dining area and two contemporary shower rooms. Neutrally decorated throughout, further benefits include gas central heating, double glazing and ample storage space. Offered to the market part furnished and is available early September 2023.

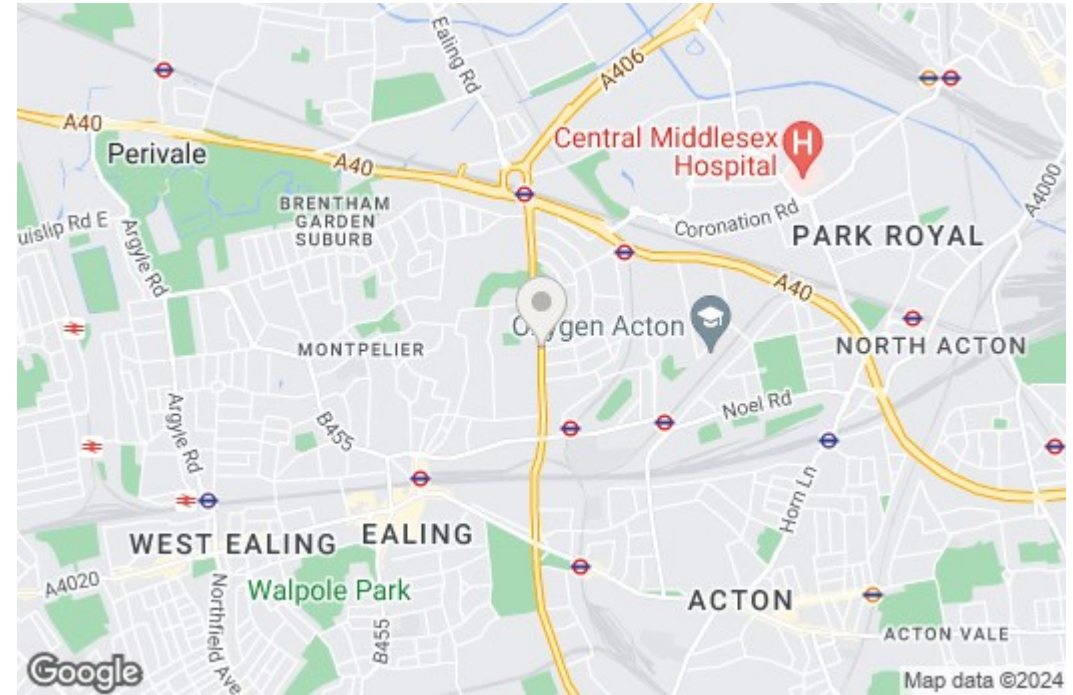
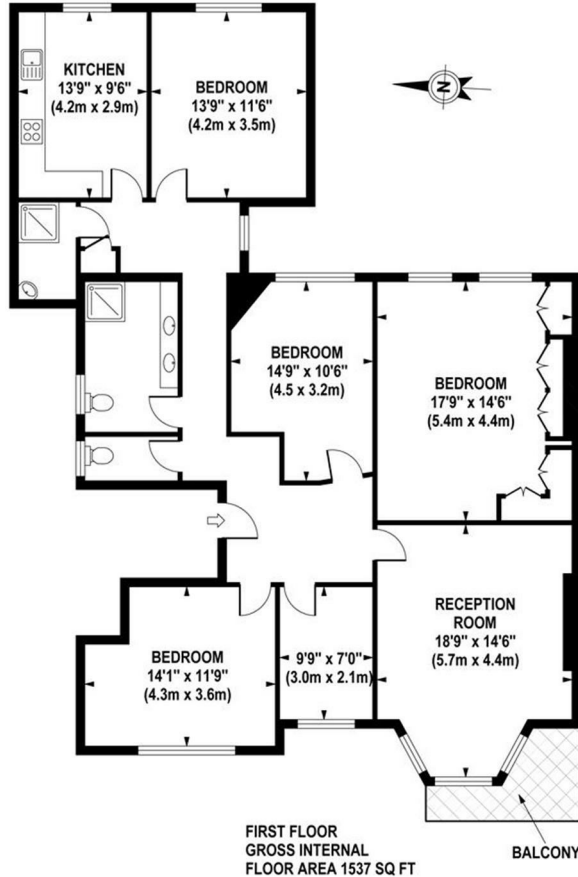


Hanger Lane is situated in a fantastic part of North Ealing, as it is ideally located for access to both North Ealing (Piccadilly line) and Ealing Broadway (Central and District lines, mainline and future Crossrail) tube stations, as well as multiple bus routes, local amenities and numerous bars, cafes and restaurants.

- Ideal for Sharers
- Large Reception Room
- Two Bathrooms
- Holding Deposit: £807.00 (1 weeks rent)
- Long Term (12-24 months+)
- Five Double Bedrooms
- Kitchen with Dining Area
- Modern and Contemporary
- Security Deposit: £4038.46
- Council Tax Band D

HANGER LANE

Approximate Gross Internal Area 1537 sq ft / 142.8 sq m



Although every attempt has been made to ensure accuracy, all measurements are approximate. The floor plan's for illustrative purposes only and not to scale. Measured in accordance to RICS standards. DE-PHOTOGRAPHY.NET