



HELLIWELL & CO
ESTATE AGENTS

Park View Road, Ealing, W5
Asking Price £3,750,000





🛏 5 Bedrooms | 🛋 3 Receptions | 🚿 4 Bathrooms | 📊 EPC Current

Helliwell & Co is proud to present this stunning, detached family house, lovingly refurbished to an excellent standard, on one of Ealing's most prestigious roads.

Boasting six bedrooms, five bathrooms, several reception areas, a driveway for multiple cars and a beautiful 120 ft rear garden, complete with summer house & swimming pool, this wonderful home really must be seen to be appreciated.



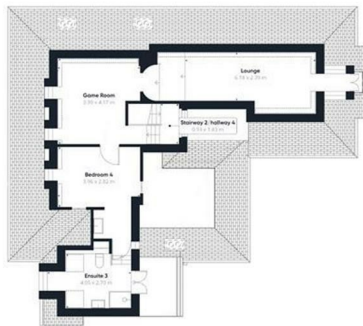
- Staggering Detached House
- Wonderful Family Home
- Superb Contemporary Finish Throughout
- One of Ealing's Finest Roads
- Driveway for Several Cars
- Over 4000 Sq Ft



Floor 0



Floor 1



Floor 2

Ground floor = 2176 sq. ft. (202.2 sq. m.)
 First floor = 1671 sq. ft. (155.2 sq. m.)
 Second floor = 762 sq. ft. (70.8 sq. m.)
 Reduced headroom / Eaves = 481 sq. ft. (44.7 sq. m.)
 Total = 5090 sq. ft. (472.9 sq. m.)
 Summer House / Swimming pool = 827 sq. ft. (76.8 sq. m.)

