







 2 Bedrooms |  1 Receptions |  1 Bathrooms |  EPC Current D

Beautiful Conversion Flat - Private Entrance - Two Bedrooms - Large Open Plan Reception with Modern Kitchen - Trendy Bathroom - Charming Feature Fireplace - Furnished / Unfurnished - Front Patio Area - Available End of October 2023 - Permit Parking Available.

This bright and spacious conversion flat, which has its own private entrance and has been beautifully presented throughout, is offered to the market furnished / unfurnished and is available end of October 2023. The property has a large reception room, with a stunning feature fireplace and a kitchen featuring integrated modern appliances, two bedrooms with built in wardrobes and a stylish bathroom, fully equipped with an over head shower and bathtub. The property which has ample storage space, further benefits from a front garden patio area and permit parking.

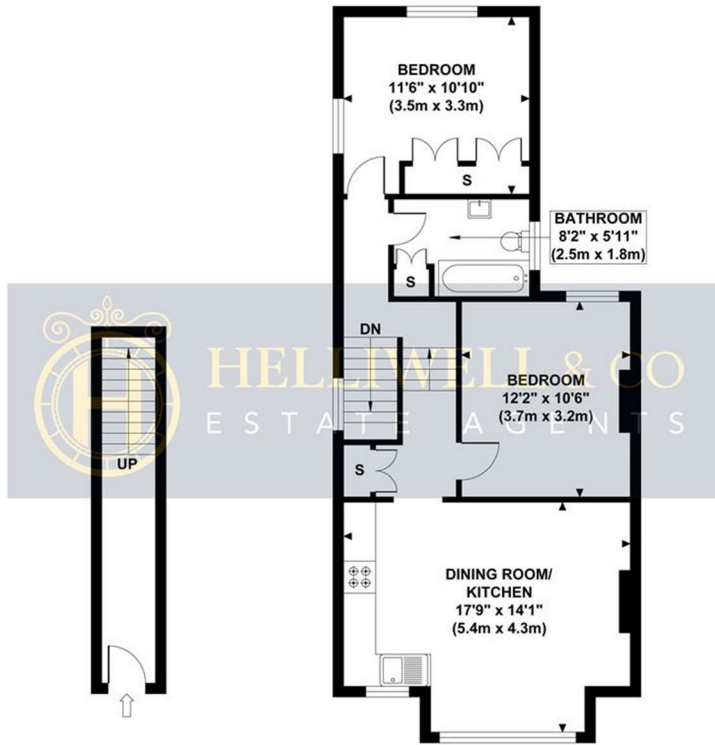
Placed on a popular residential road in Northfields, the property is ideally located for access to Northfields tube station (Piccadilly line) and the fantastic array of local shops, cafes and restaurants the area has to offer. Ealing Broadways bustling shopping centre and station (Central, District, Mainline, Elizabeth Line), are also within easy reach, as well as the picturesque open spaces of both Elthorne and Lammas Parks.

- Stunning Conversion Flat
- Two Bedrooms
- Modern Kitchen & Bathroom
- Long Let (12-24 months+)
- Security Deposit: £2423.07 (5 weeks rent)
- First Floor
- Open Plan Reception
- Ample Storage
- Council Tax Band C
- Holding Deposit: £484.00 (1 weeks rent)

NORTHFIELDS AVENUE

Approximate Gross Internal Area

714 sq ft / 66.3 sq m



GROUND FLOOR
GROSS INTERNAL
FLOOR AREA 70 SQ FT

FIRST FLOOR
GROSS INTERNAL
FLOOR AREA 644 SQ FT

Although every attempt has been made to ensure accuracy,
all measurements are approximate and no responsibility is taken for any error, omission, or mid-statement.
This floor plan is for illustrative purposes only and not to scale. Measured in accordance to RICS standards.
GB PRO PHOTOS

