



HELLIWELL & CO
ESTATE AGENTS

Chelsea Gardens, Ealing, W13
£2,800 Per Calendar Month





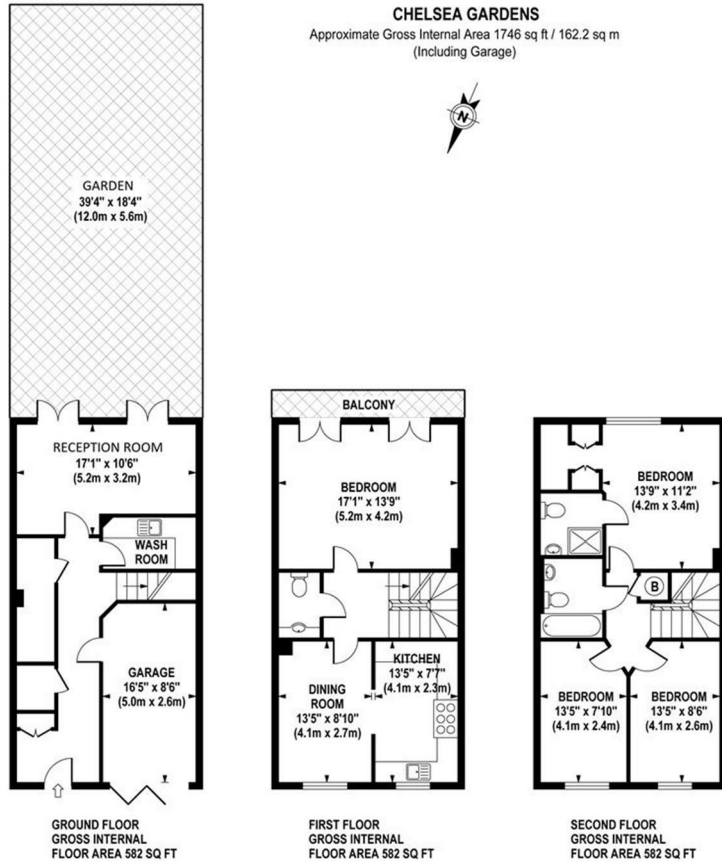
🛏️ 4 Bedrooms | 🛋️ 2 Receptions | 🚿 2 Bathrooms | 📊 EPC Current C

Gated Development - Well Presented Townhouse - Four Bedrooms - Two Reception Rooms - Off Street Parking - Private Garage - Terrace - Bright and Spacious - Available End of January 2024.

Located within this prestigious gated development, this impressive townhouse is placed over three floors and offers a private garage and off street parking. Entering through the entrance hallway, the property leads through to a bright and spacious reception room with access to the large, private rear garden which backs on to beautiful open spaces. The first floor of the property offers a large bedroom with doors leading out to a charming terrace, a modern semi-open plan kitchen with integrated appliances, a dining room and first floor WC, whilst the second floor has three large double bedrooms with built-in storage cupboards, a family bathroom and an additional modern en suite bathroom to the master bedroom. The property which has been neutrally decorated to a high standard throughout, further benefits from plenty of natural light and gas central heating. Offered to the market furnished or unfurnished and is available end of January 2024.

Chelsea Gardens is in a great Ealing location. Placed in the leafy neighbourhoods of West Ealing, the property is only 0.1 miles walk to Castle Bar Park Railway Station, which grants the property convenient transport links to Central London and beyond. The property is also inside a mile of Hobbayne Primary School, Drayton Manor High School, and Drayton Green Primary School, which would be perfect for families moving into the area.

- Gated Development
- Ideal Family Home
- Two Reception Rooms
- Holding Deposit: £646.00 (1 weeks rent)
- Council Tax Band G
- Impressive Townhouse
- Four Bedrooms
- Off Street Parking & Private Garage
- Security Deposit: £3230.76 (5 weeks rent)
- Long Let: 12 months+



Although every attempt has been made to ensure accuracy, all measurements are approximate.
The floor plan is for illustrative purposes only and not to scale. Measured in accordance to RICS standards.
DE-PHOTOGRAPHY.NET

