







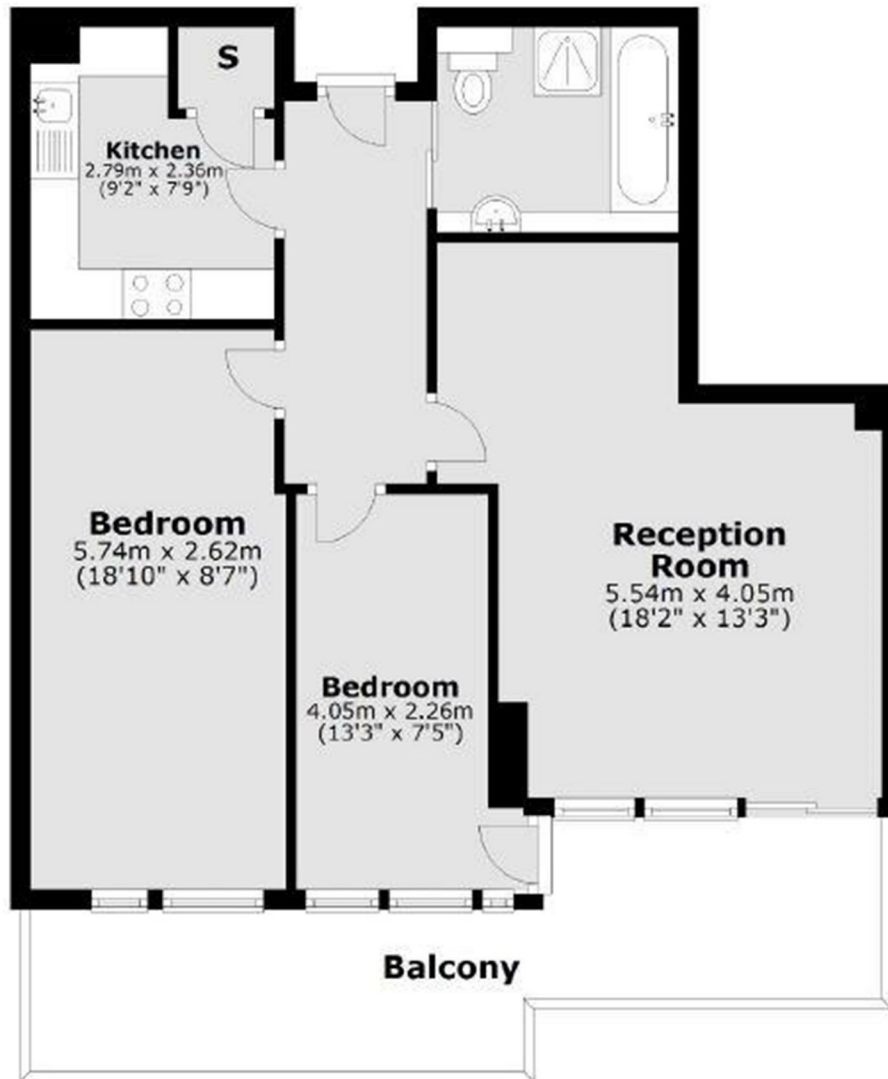
🛏️ 2 Bedrooms | 🛋️ 1 Receptions | 🚿 1 Bathrooms | 📊 EPC Current D

Located on the exclusive Chelsea Harbour development, this is a truly wonderful two bedroom apartment offering a spacious interior with contemporary fittings and an amazing terrace with river views. Chelsea Harbour is located just off The Kings Road with it's own marina and access to The Thames.

Accommodation is made up of a beautiful contemporary kitchen, stylish four piece bathroom and double reception room with dining area and living room with patio doors to a large private balcony with amazing far reaching views of the river. There is a spacious principal bedroom and second single bedroom. The stylish bathroom comes with a separate shower and jacuzzi bath and there is also a five star concierge service with porter and secure off street parking.

Thames Quay is ideally located moments from the amenities of Chelsea Harbour and within easy reach of the shops, bars and restaurants of the prestigious King's Road. The motorists can gain easy access to the A4/M4 links to central London and the west.

- Stunning Terrace With Direct River Views
- Fitted Kitchen With Integrated Appliances
- Ultra modern Bathroom With Separate Shower & Jacuzzi
- Leasehold: 88 Years
- Ground Rent: £400.00 per annum
- Secure Underground Parking
- Generously Sized Principal Suite
- On Site Concierge & Porter
- Service Charge: £6,893.00 per annum
- Council Tax Band: G



Main area: Approx. 63.9 sq. metres (687.9 sq. feet)
Plus balconies, approx. 16.0 sq. metres (172.2 sq. feet)