



HELLIWELL & CO
ESTATE AGENTS

Woburn, Clivedon Court, Ealing W13
Offers In Excess Of £310,000





🛏️ 1 Bedrooms | 🚗 1 Receptions | 🚿 1 Bathrooms | 📊 EPC Current D

Helliwell & Co is pleased to exclusively present a rare opportunity to acquire a huge one bedroom, top floor apartment, with private garage, situated within a very popular development just moments from Ealing Broadway.

At over 660 sq ft this property offers huge potential to investors and end-users. The apartment briefly comprises one double bedroom, exceptionally large sitting room with far-reaching views from the balcony, separate bathroom and kitchen, plenty of storage and a private garage. Further benefits include share of freehold and no onward chain.

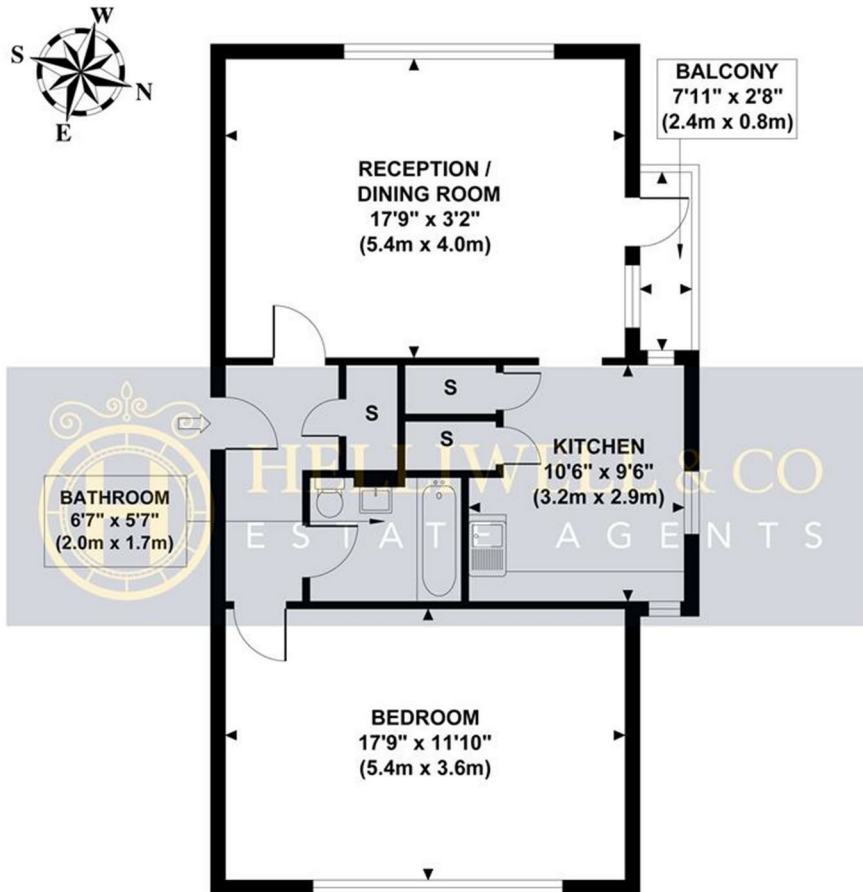
Clivedon Court is perfectly located for access to local amenities and transport links, with Pitshanger Lane conveniently close, that offers a variety of local shops and cafes as well as Ealing Broadway Station (Central, District, Overground and Elizabeth Lines) and Ealing Broadway Shopping centre close by. The open spaces of Cleveland Park and Pitshanger Park are also within close proximity of the property.

- One Bedroom Flat
- Over 600sqft
- Private Balcony
- Share of Freehold: 987 years
- Council Tax Band: C
- Chain Free
- Garage
- Off Street Parking
- Service Charge: £2,225.20pa

Woburn, Clivedon Court

Approximate Gross Internal Area

663 sq ft / 61.6 sq m



**THIRD FLOOR
GROSS INTERNAL
FLOOR AREA 663 SQ FT**

Although every attempt has been made to ensure accuracy, all measurements are approximate and no responsibility is taken for any error, omission, or mis-statement. This floor plan is for illustrative purposes only and not to scale. Measured in accordance to RICS standards.

