







🛏️ 2 Bedrooms | 🛋️ 1 Receptions | 🚿 1 Bathrooms | 📊 EPC Current C

Split Level Flat – Private Entrance – Bright and Spacious – Large Reception Room – Two Double Bedrooms – Built-in Wardrobes – Kitchen with Integrated Appliances – Private Garden Area - Permit Parking.

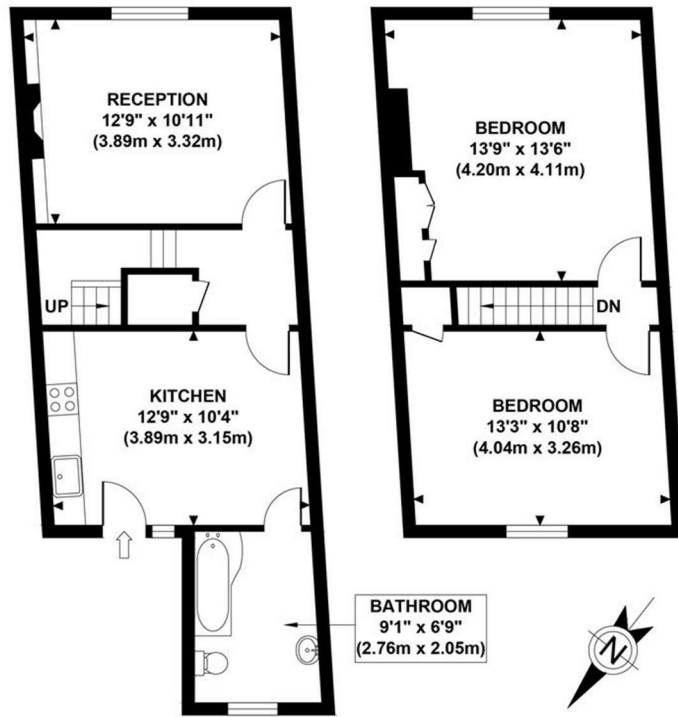
With its own private entrance, this bright and spacious split level flat is offered to the market unfurnished and is available end of May. The property has a large reception room, a separate kitchen with integrated appliances and space for dining, two double bedrooms (one of which has built in wardrobes) and a family bathroom. Further benefits include wooden flooring, gas central heating and a private garden area.

Placed in a fantastic location, the property is convenient for access to Ealing Broadways' (Central and District line, mainline and Elizabeth Line) tube station and popular, bustling shopping centre, as well as the numerous local shops, cafes and restaurants in the area. The beautiful open spaces of Haven Green are located just across the street, as well as having access to both Walpole and Lammas Parks also.

- Private Entrance
- Large Reception
- Gas Central Heating
- Available May 27th
- Security Deposit (5 weeks rent): £2,250.00
- Two Double Bedrooms
- Separate Kitchen
- Unfurnished
- Holding Deposit (1 weeks rent): £450.00
- Council Tax Band: E

HAVEN LANE

Approximate Gross Internal Area 781 sq ft / 72.6 sq m



Although every attempt has been made to ensure accuracy, all measurements are approximate. The floor plan's for illustrative purposes only and not to scale. Measured in accordance to RICS standards.

