



HELLIWELL & CO
ESTATE AGENTS

Hanger Green, Ealing, W5
£2,000 Per Calendar Month





 2 Bedrooms |  1 Receptions |  2 Bathrooms |  EPC Current C

Purpose Built Block - Large Reception Room - Two Bedrooms - Two Bathrooms (one en suite) - Allocated Off Street Parking - Wooden Flooring Throughout - Multiple Transport Links - Over 800sqft.

Placed within a well maintained purpose built block, the property has a large reception room perfect for entertaining, a well-equipped separate kitchen, a generous double bedroom with built-in storage and an en-suite bathroom, a second double bedroom, family bathroom and well maintained communal gardens. Further benefits include allocated off street parking, new double-glazed windows and wooden flooring throughout.

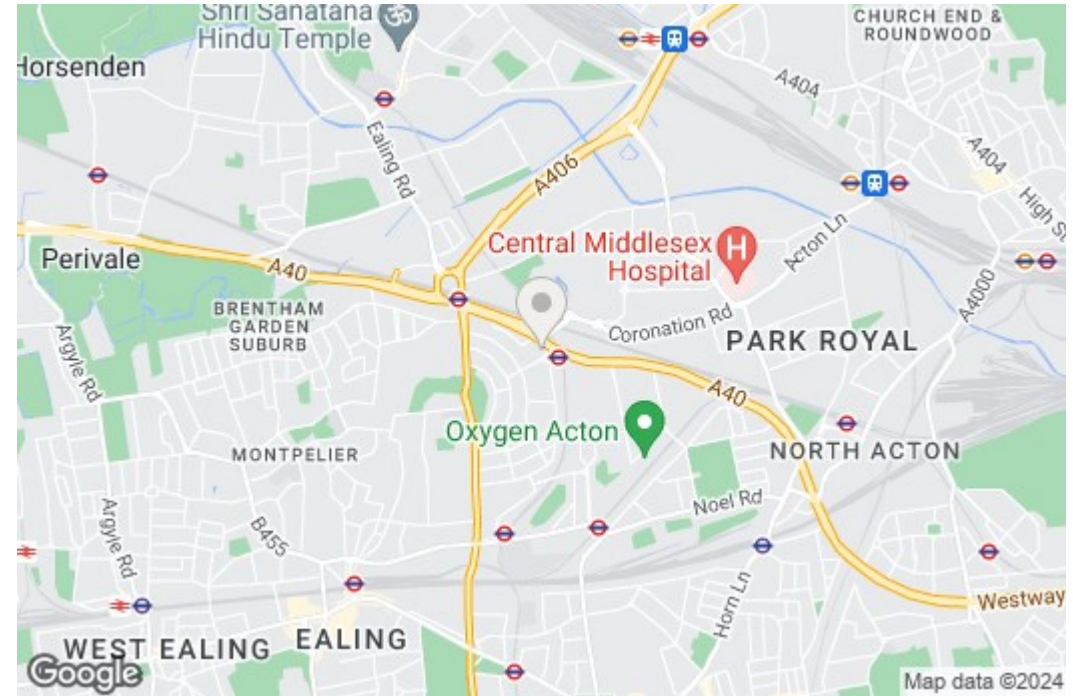
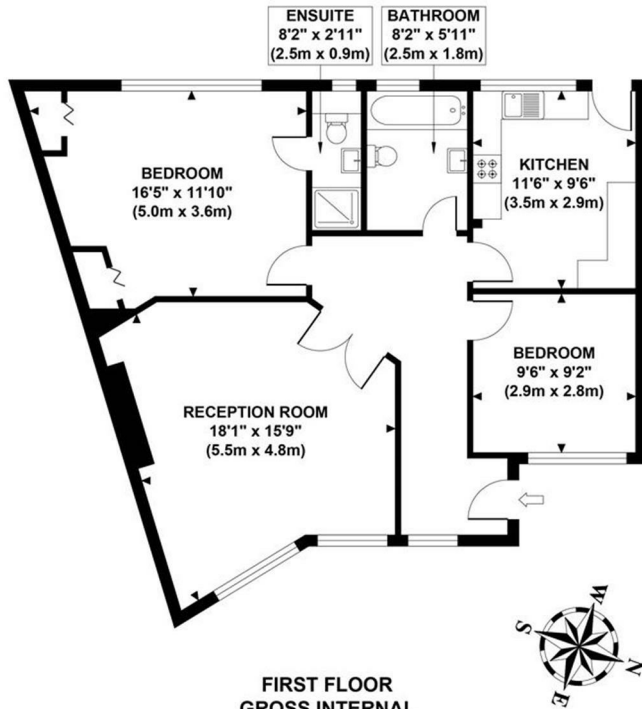
Hanger Court, situated on Hanger Green is ideally located for access to both Hanger Lane (Central Line) and Park Royal (Piccadilly Line) tube stations, as well as Ealing Broadway's station (Central and District Lines, mainline and Elizabeth Line), shopping centre, local shops, restaurants and bars. The open spaces of Hanger Hill and Pitzhanger Park are also nearby.

- Two Double Bedrooms
- Allocated Parking Space
- Envious School Catchment
- Council Tax Band: D
- Security Deposit: £2,307.69
- Two Bathrooms
- Attractive Communal Grounds
- Long Term (12-24 months+)
- Holding Deposit: £461.00
- Available July 2024

Helliwell & Co.

HANGER COURT

Approximate Gross Internal Area
800 sq ft / 74.30 sq m



Although every attempt has been made to ensure accuracy, all measurements are approximate and no responsibility is taken for any error, omission, or mid-statement. This floor plan is for illustrative purposes only and not to scale. Measured in accordance to RICS standards.