







 2 Bedrooms |  1 Receptions |  1 Bathrooms |  EPC Current C

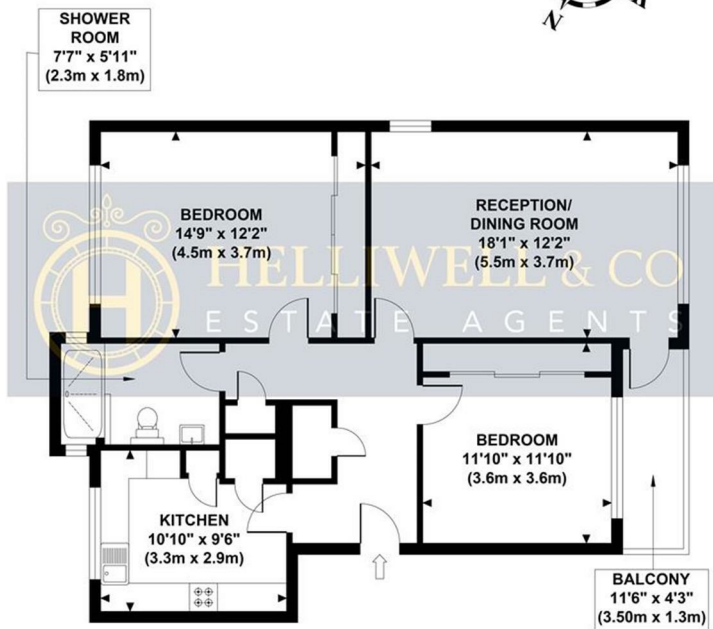
Helliwell & Co are proud to present a bright and spacious purpose built flat that has been finished to an excellent standard and is available from Early November. The property has a large reception room with access to a private balcony, two double bedrooms both with built-in John Lewis wardrobes, a kitchen with integrated appliances (dishwasher, washer dryer and full size fridge-freezer) and a fully tiled modern shower room. Further benefits include off street parking, communal gardens, attractive wooden flooring throughout, gas central heating, double glazing, a brand new mega flow system and ample storage space. Offered to market unfurnished and is Early November 2024.

Frinton Court, is ideally located for access to Ealing Broadway (Central and District lines, mainline and Elizabeth Line), Drayton Green (mainline) and Castle Bar Park (mainline) stations, as well as the beautiful open spaces of Pitshanger Park. There are a selection of local shops, cafes and restaurants in the area and multiple bus links.

- Purpose Built Flat
- Large Living Room
- Integrated Appliances
- Off Street Parking
- Available Now
- Bright & Spacious
- Two Double Bedrooms
- Private Balcony
- Communal Gardens

FRINTON COURT

Approximate Gross Internal Area
817 sq ft / 75.90 sq m



SECOND FLOOR
GROSS INTERNAL
FLOOR AREA 817 SQ FT

Although every attempt has been made to ensure accuracy, all measurements are approximate and no responsibility is taken for any error, omission, or mid-statement. This floor plan is for illustrative purposes only and not to scale. Measured in accordance to RICS standards.

