









🛏️ 2 Bedrooms | 🛋️ 1 Receptions | 🚿 1 Bathrooms | 📊 EPC Current B

Helliwell & Co. are proud to present this exquisite two-bedroom apartment which is located on Ealing Road and offers a perfect blend of modern living and convenience. The new build property spans an impressive 905 square feet, providing ample space for comfortable living. Upon entering, you are greeted by a bright and spacious reception room which has direct access to the enclosed balcony, ideal for both relaxation and entertaining. The apartment features two well-proportioned double bedrooms, ensuring that there is plenty of room for family or guests. The modern kitchen is equipped with top-of-the-range integrated appliances, making it a delight for any culinary enthusiast. The stylish bathroom adds a touch of luxury to your daily routine.

Residents will appreciate the added benefits of private underground parking, ensuring your vehicle is secure and easily accessible. The property also boasts a stunning communal terrace, perfect for enjoying the outdoors, as well as a residents' gym for those who wish to maintain an active lifestyle. Offered to the market furnished, this apartment is ready for immediate occupation, making it an ideal choice for those looking to move in without delay. With its contemporary design and prime location, this property is a fantastic opportunity for anyone seeking a modern home in Brentford. Don't miss the chance to make this exceptional apartment your new residence.

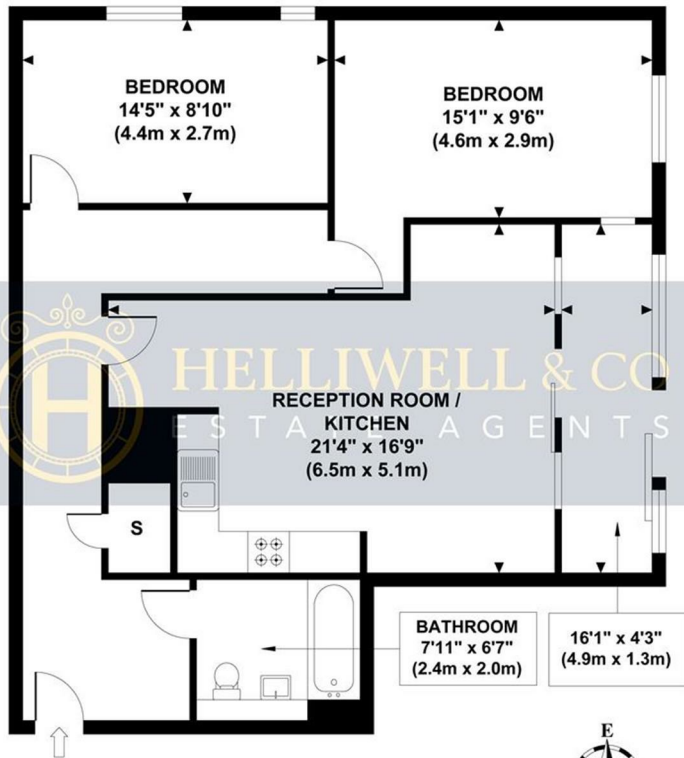
With numerous local shops, cafés and restaurants in the area, Westgate House is conveniently located for access to numerous bus routes and Brentford mainline station. Prospective tenants can enjoy the beautiful open spaces of both Kew Gardens and Gunnersbury Park which are located nearby, as well as lovely walks by the river in Kew.

- Well Maintained Purpose Built Development
- Large Living Room with Views and Balcony
- Private Underground Parking
- Holding Deposit (1 weeks rent): £530.00
- Council Tax Band: E
- Two Good Sized Double Bedrooms
- Modern Kitchen and Contemporary Bathroom
- Stunning Communal Terrace and Residents Gym
- Security Deposit (5 weeks rent): £2,653.84
- Long Let (12-24 months+)

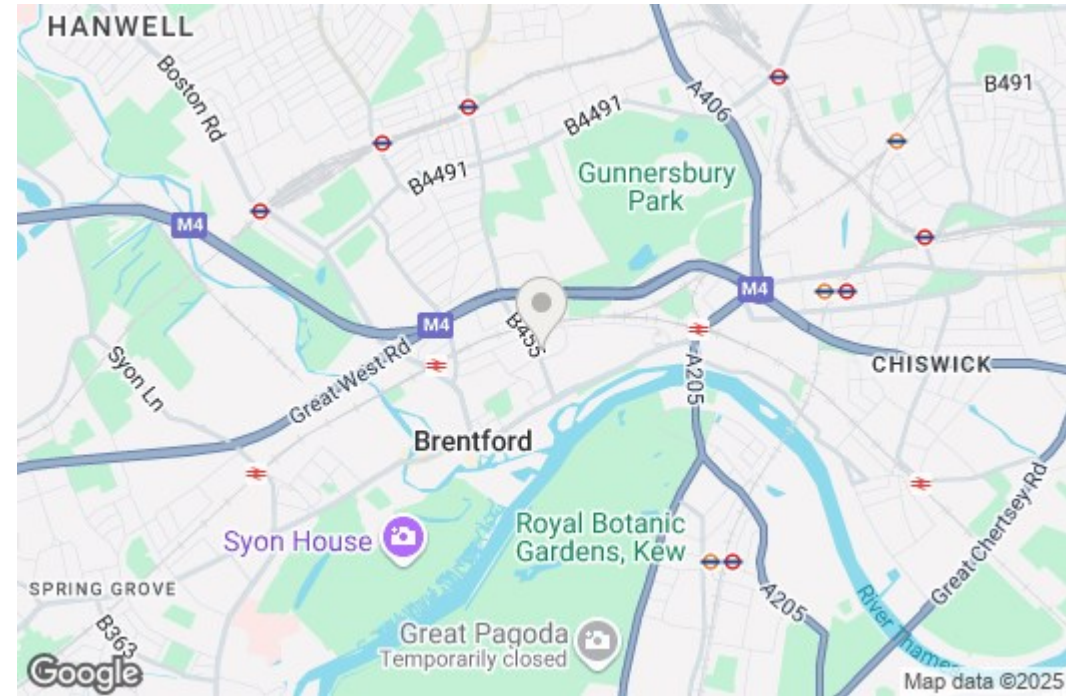


**WESTGATE HOUSE**

Approximate Gross Internal Area  
905 sq ft / 84.08 sq m



**FIRST FLOOR  
GROSS INTERNAL  
FLOOR AREA 905 SQ FT**



Although every attempt has been made to ensure accuracy, all measurements are approximate and no responsibility is taken for any error, omission, or mid-statement. This floor plan is for illustrative purposes only and not to scale. Measured in accordance to RICS standards.