







 1 Bedrooms |  1 Receptions |  1 Bathrooms |  EPC Current C

No Service Charge for Two Years Helliwell & Co are proud to present a unique ground-floor one-bedroom apartment within a prestigious development on one of Ealing's most desirable roads.

Offered to the market with a share of freehold and no onward chain, this truly special property has been renovated to the highest standard throughout. Boasting over 612 sqft, it offers buyers a taste of luxury within a tranquil location yet moments from Ealing Broadway and its excellent transport links. The flat boasts a large double bedroom with built-in ample storage. The fully tiled bathroom has a separate rainfall shower and bathtub equipped. Leading to the reception, which offers a unique living experience with lots of natural light and a fitted kitchen with all the expected modern appliances. Further benefits include double-glazed sash windows, gas central heating, engineering wooden flooring, underfloor heating in the bathroom, video entry intercom systems, keyless entry, electric blinds, communal gardens, and bike storage, all within a high-end, secure development.

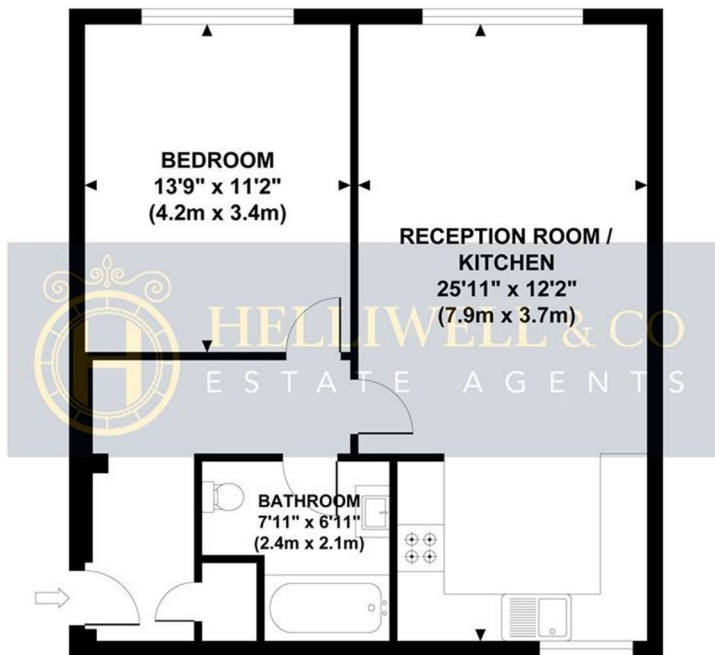
Mount Park Crescent is widely regarded as the most prestigious road in W5, just a stone's throw from Ealing Broadway (Elizabeth Line, Central Line, District Line & GWR), with its abundance of cafes, shops, restaurants and bars. The location is also perfect for exploring a variety of beautiful parks and benefiting from a range of exceptional schools for all ages.

- Luxurious One Bedroom Apartment
- Vast High Ceilings
- Excellent Location
- Renovated to a High Standard
- Communal Gardens
- No Onward Chain
- Video & Keyless Entry
- Share of Freehold (999 year lease)
- Service Charge: £1,000pa
- Council Tax Band: D



MOUNT PARK ROAD

Approximate Gross Internal Area
612 sq ft / 56.90 sq m



GROUND FLOOR
GROSS INTERNAL
FLOOR AREA 612 SQ FT

Although every attempt has been made to ensure accuracy,
all measurements are approximate and no responsibility is taken for any error, omission, or mid-statement.
This floor plan is for illustrative purposes only and not to scale. Measured in accordance to RICS standards.

