







 1 Bedrooms |  1 Receptions |  1 Bathrooms |  EPC Current C

Helliwell & Co are proud to present a unique ground-floor one-bedroom apartment within a prestigious development on one of Ealing's most desirable roads.

Offered to the market with a share of freehold and no onward chain, this truly special property has been renovated to the highest standard throughout. Boasting over 612 sqft, it offers buyers a taste of luxury within a tranquil location yet moments from Ealing Broadway and its excellent transport links. The flat boasts a large double bedroom with built-in ample storage. The fully tiled bathroom has a separate rainfall shower and bathtub equipped. Leading to the reception, which offers a unique living experience with lots of natural light and a fitted kitchen with all the expected modern appliances. Further benefits include double-glazed sash windows, gas central heating, engineering wooden flooring, underfloor heating in the bathroom, video entry intercom systems, keyless entry, electric blinds, communal gardens, and bike storage, all within a high-end, secure development.

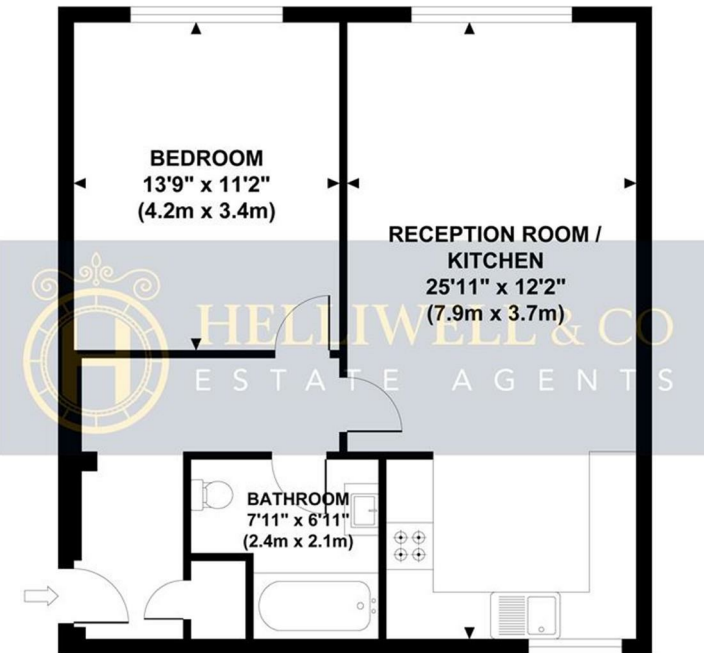
Mount Park Crescent is widely regarded as the most prestigious road in W5, just a stone's throw from Ealing Broadway (Elizabeth Line, Central Line, District Line & GWR), with its abundance of cafes, shops, restaurants and bars. The location is also perfect for exploring a variety of beautiful parks and benefiting from a range of exceptional schools for all ages.

- Luxurious One Bedroom Apartment
- Vast High Ceilings
- Excellent Location
- Renovated to a High Standard
- Communal Gardens
- No Onward Chain
- Video & Keyless Entry
- Share of Freehold (999 year lease)
- Service Charge: £1,000pa
- Council Tax Band: D



**MOUNT PARK ROAD**

Approximate Gross Internal Area  
612 sq ft / 56.90 sq m



**GROUND FLOOR**  
**GROSS INTERNAL**  
**FLOOR AREA 612 SQ FT**

Although every attempt has been made to ensure accuracy,  
all measurements are approximate and no responsibility is taken for any error, omission, or mid-statement.  
This floor plan is for illustrative purposes only and not to scale. Measured in accordance to RICS standards.

