



HELLIWELL & CO
ESTATE AGENTS

Vale Court, Brentford TW8
Guide Price £325,000





 1 Bedrooms |  1 Receptions |  1 Bathrooms |  EPC Current B

Helliwell & Co are proud to present this larger-than-average one-bedroom apartment with allocated underground parking in Brentford.

This stunning apartment offers elegance, style and comfort with interior layouts suited to modern living. Set out on the first floor, light and space are maximised with the addition of underfloor heating. This apartment comprises a spacious entrance hall, utility/storage room and a fabulous reception room with a dining area and a stylish kitchen. The spacious double bedroom benefits from built-in wardrobes. The modern bathroom comes equipped with a bathtub and power shower. Additionally, the property benefits from an allocated underground parking space, lift, EWS1 Form and still under NHBC guarantee.

Brentford is within easy reach of neighbours Ealing, Chiswick and Richmond with notable places to visit such as Kew Gardens, Gunnersbury Park as well as a host of shops, restaurants and bars. Brentford is currently going through an incredible era of redevelopment which includes the High Street and multiple landmark developments along the Grand Union Canal and River Thames. There are an ever increasing selection of restaurants in the area

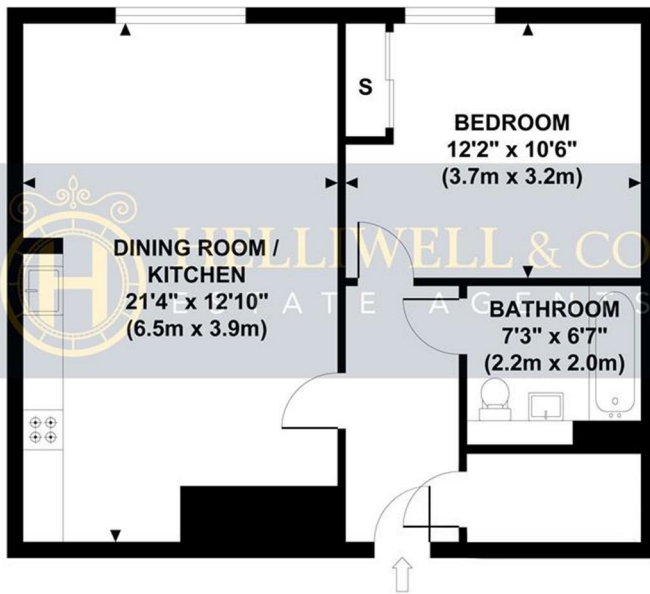
Vale Court is a pristine development nestled between Ealing and Kew Bridge, providing excellent public transport links as well as easy access to some wonderful open spaces including Kew Gardens and Gunnersbury Park.

- Apartment
- Extremely Spacious
- Ample Storage
- Video Entry
- Lift
- Underground Allocated Parking
- Tenure: Leasehold (114 years)
- Service Charge: £2,037.96
- Ground Rent: £470pa
- Council Tax band: C

VALE COURT

Approximate Gross Internal Area

543 sq ft / 50.45 sq m



**FIRST FLOOR FLAT
GROSS INTERNAL
FLOOR AREA 543 SQ FT**

Although every attempt has been made to ensure accuracy, all measurements are approximate and no responsibility is taken for any error, omission, or mid-statement. This floor plan is for illustrative purposes only and not to scale. Measured in accordance to RICS standards.

