



HELLIWELL & CO
ESTATE AGENTS

St. Marks Road, Ealing, W5
Guide Price £865,000





 3 Bedrooms |  2 Receptions |  2 Bathrooms |  EPC Current D

Helliwell and Co are delighted to present this highly desirable cottage located on a quiet cul-de-sac close to the beautiful green open spaces of Ealing Common.

This beautiful and charming Victorian cottage is arranged over three floors and boasts charm and character throughout. As you enter, you are met with a snug front reception with a period fireplace and picturesque outlook onto the quaint front garden. You then lead onto an extended rear dining room with an open-plan fitted kitchen perfect for entertaining, with french doors on a sunny south-facing suntrap private courtyard. There is also a downstairs WC which practically houses utilities.

On the first floor, there are two double bedrooms the main bedroom enjoying green and peaceful views, a bathroom with rainfall shower and bathtub, and stairs to the loft, which has been converted and boasts a further double bedroom with ample storage.

St Mark's Road is ideally located for access to both Ealing Broadway (Crossrail, Central and District lines, mainline) and Ealing Common (District and Piccadilly line). There are also multiple local shops, restaurants and bars in the area, as well as numerous local schools and the open spaces of Ealing Common.

- Victorian Cottage
- Three Double Bedrooms
- Period Features
- Downstairs WC
- South Facing Courtyard
- No Onward Chain
- Cul-de-sac
- Prime Ealing Location
- Tenure: Freehold
- Council Tax Band: E

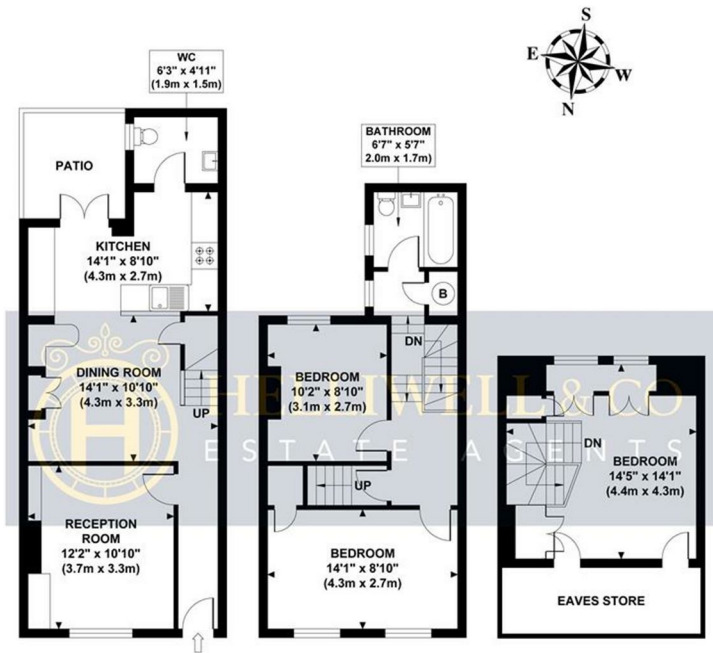
ST MARK'S ROAD

Approximate Gross Internal Area

1057 sq ft / 98.20 sq m

Eaves Store Area 72 sq ft / 6.70 sq m

Total Area 1129 sq ft / 104.9 sq m



GROUND FLOOR
GROSS INTERNAL
FLOOR AREA 473 SQ FT

FIRST FLOOR
GROSS INTERNAL
FLOOR AREA 381 SQ FT

SECOND FLOOR
GROSS INTERNAL
FLOOR AREA 203 SQ FT

Although every attempt has been made to ensure accuracy,
all measurements are approximate and no responsibility is taken for any error, omission, or mid-statement.
This floor plan is for illustrative purposes only and not to scale. Measured in accordance to RICS standards.

