



HELLIWELL & CO
ESTATE AGENTS

Marlborough Road, Ealing W5
Guide Price £1,150,000





 3 Bedrooms |  2 Receptions |  1 Bathrooms |  EPC Current

Helliwell & Co. is proud to present this semi-detached home with vast potential, offered to the market with no onward chain.

Located within a highly sought-after pocket south of Ealing Broadway, this is the perfect buy for those looking to add their value and their stamp to their forever home. As you enter the large front garden, which has scope to create off-street parking and into the spacious hallway, you are met with a good-sized front reception with an original fireplace. The second reception leads onto a desirable south-facing garden with a garage and rear and side access. The kitchen is separate and features an open hatch onto the dining room. Upstairs, you have three bedrooms, two large doubles, and one single. The bathroom features a separate WC and access to the loft, offering potential for extension (STPP). Further benefits include its unique corner plot, double glazing, a recently installed boiler and no onward chain.

Marlborough Road is a beautiful, peaceful, tree-lined street, ideally located for access to Ealing Broadway (Elizabeth Line, Central Line, District Line & GWR) and South Ealing (Piccadilly Line), as well as an abundance of boutiques, coffee shops, pubs, restaurants and excellent schools. The stunning open spaces of Lammas Park, Walpole Park & Ealing Common are also within touching distance.

- Semi-detached House
- Corner Plot
- Prime Ealing Location
- Double Glazing
- South Facing Garden
- Garage
- No Onward Chain
- Potential to Extend (STPP)
- Tenure: Freehold
- Council Tax Band: F

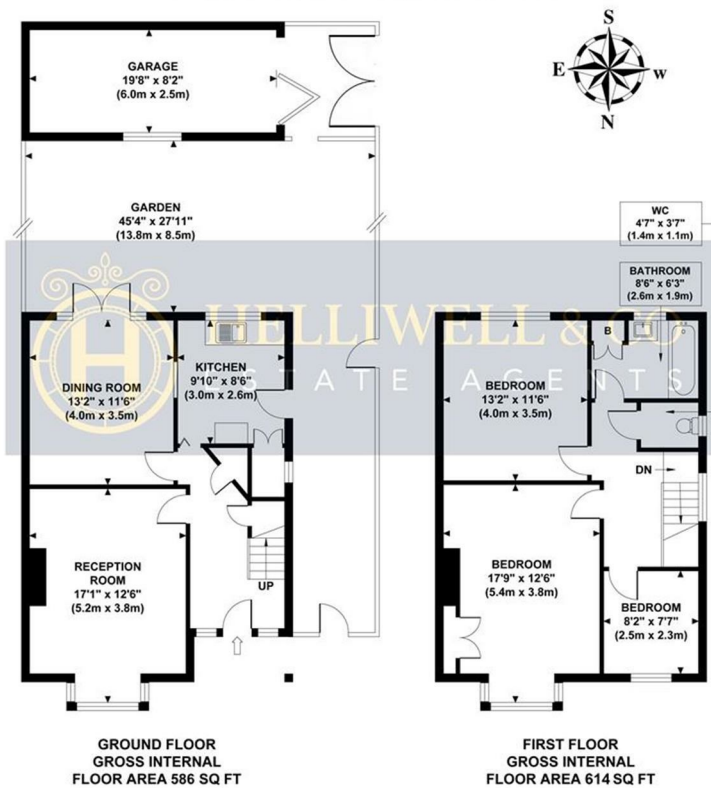
MARLBOROUGH ROAD

Approximate Gross Internal Area

1200 sq ft / 111.5 sq m

Garage Area 161 sq ft / 15.0 sq m

Total Area 1361 sq ft / 126.5 sq m



Although every attempt has been made to ensure accuracy,
all measurements are approximate and no responsibility is taken for any error, omission, or mid-statement.
This floor plan is for illustrative purposes only and not to scale. Measured in accordance to RICS standards.

