



**HELLIWELL & CO**  
ESTATE AGENTS

**St Marys Place, Ealing, W5**  
**£2,400 Per Calendar Month**





 2 Bedrooms |  2 Receptions |  1 Bathrooms |  EPC Current D

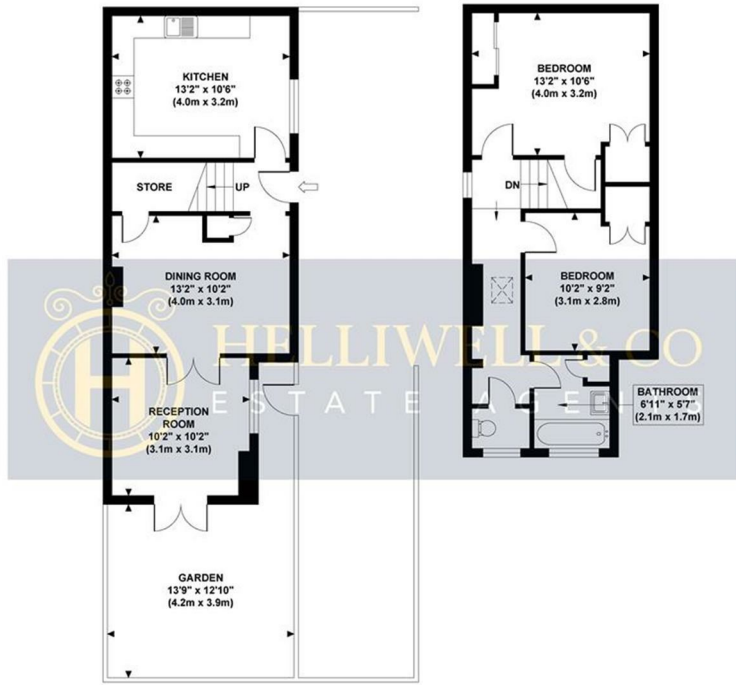
Helliwell & Co. are delighted to present this attractive semi-detached cottage which is located on one of Ealing's most delightful and picturesque Roads. The property which is bright and spacious throughout, has lovingly retained its period features and is placed over two floors. The ground floor comprises two large reception rooms, an expansive kitchen with integrated appliances and French doors leading out to the well maintained private garden, whilst two double bedrooms with built in storage and a fully tiled family bathroom are located on the first floor. Further features include beautiful period features such as fireplaces, high ceilings and sash windows, a useful loft storage space and off street parking for one car. This ideal family home, is offered to the market unfurnished and is from early August 2025.

St Mary's Place is conveniently located for both South Ealing (Piccadilly line) and Ealing Broadway (District and Central lines, mainline and future Crossrail) tube stations, as well as a variety of bus transport links to Kingston, Golders Green and Uxbridge. Ealing Broadway's shopping centre, bars and restaurants are also easily accessible, along with South Ealing's beautiful Walpole and Lammas Parks. Local schools include The Grange Children's Centre and Primary School, Mount Carmel Catholic Primary School and Little Ealing Primary School.

- Picturesque Semi-Detached Cottage
- Two Double Bedrooms with Storage
- Private Garden
- Holding Deposit (1 weeks rent): £553.00
- Council Tax Band E
- Period Charm & Character
- Two Bright & Airy Receptions
- Loft Storage Space & Off Street Parking
- Security Deposit (5 weeks rent): £2,769.23
- Long Let (12-24 months+)

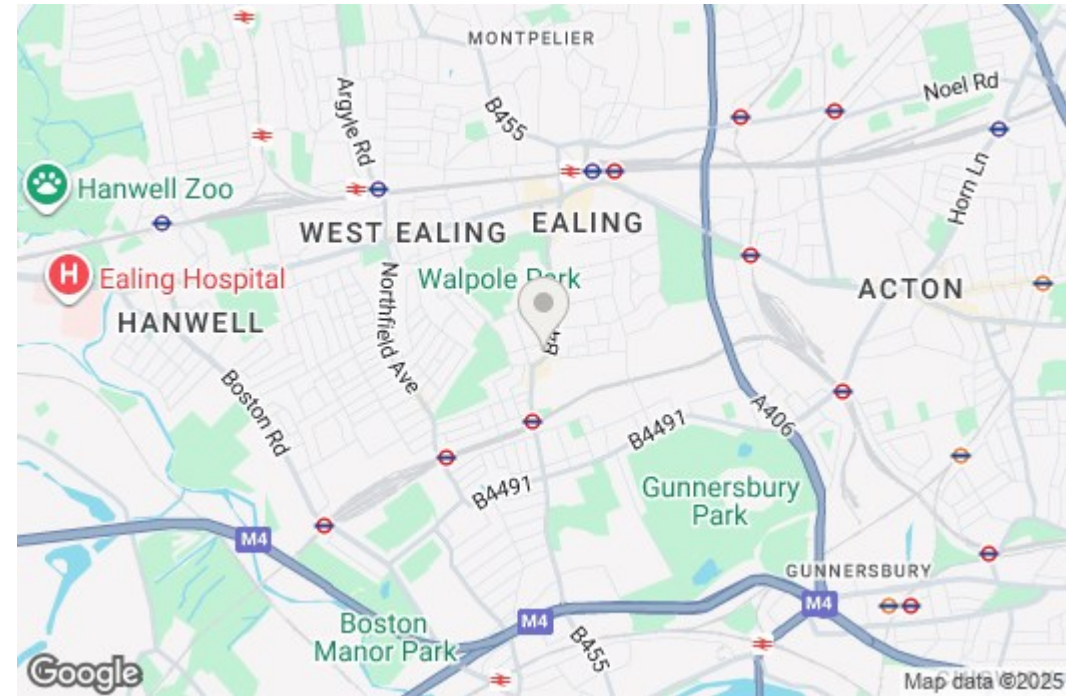
**ST MARY'S PLACE**

Approximate Gross Internal Area  
832 sq ft / 77.3 sq m



GROUND FLOOR  
GROSS INTERNAL  
FLOOR AREA 432 SQ FT

FIRST FLOOR  
GROSS INTERNAL  
FLOOR AREA 400 SQ FT



Although every attempt has been made to ensure accuracy, all measurements are approximate and no responsibility is taken for any error, omission, or mid-statement. This floor plan is for illustrative purposes only and not to scale. Measured in accordance to RICS standards.