



HELLIWELL & CO
ESTATE AGENTS

Shaa Road, Acton W3
Asking Price £550,000





🛏 2 Bedrooms | 🛋 1 Receptions | 🚿 1 Bathrooms | 📊 EPC Current C

Helliwell & Co. are proud to present this two-bedroom first-floor period conversion flat located in the heart of Poets Corner, offered to the market with a share of freehold and no onward chain.

Situated on one of Acton's most prestigious roads, this beautifully presented conversion flat offers an abundance of natural light and space throughout. Located on the first floor, the property features a spacious semi-open plan reception room with attractive wooden floors and ample built-in storage with a modern kitchen, fully equipped with integrated appliances, two good-sized double bedrooms and a contemporary tiled bathroom with bathtub and rainfall shower feature. Further benefits include access to a communal garden and off-street parking, offered to the market with a share of freehold and no onward chain.

Woodley House is located on a quiet residential street and is perfectly located for access to a number of transport links, Acton Central (Overground) station, East Acton (Central Line) and Acton Mainline (Elizabeth Line) are all within walking distance from the property as well as great access to the A40 for motorists. The beautiful open spaces of Acton park are just moments away from the property with Churchfield Road, offering a range of amenities close by. Acton High street also just over half a mile away offering a further variety of shops, bars, and restaurants.

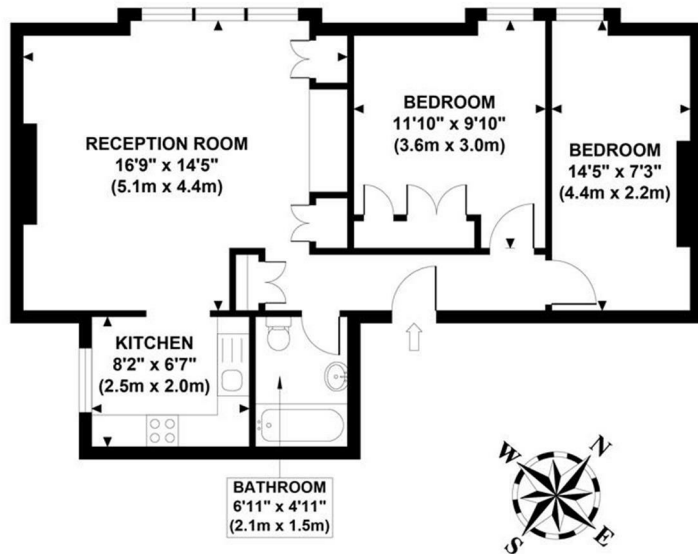
- Period Conversion Flat
- First Floor
- Poets Corner
- Two Double Bedrooms
- Communal Gardens
- No Onward Chain
- Off-Street Parking
- Service Charge: £1,500
- Tenure: Share of freehold
- Council Tax Band: C

HELLIWELL & CO.

WOODLEY HOUSE

Approximate Gross Internal Area

596 sq ft / 55.40 sq m



**FIRST FLOOR
GROSS INTERNAL
FLOOR AREA 596 SQ FT**

Although every attempt has been made to ensure accuracy, all measurements are approximate and no responsibility is taken for any error, omission, or mid-statement. This floor plan is for illustrative purposes only and not to scale. Measured in accordance to RICS standards.

