









🛏 2 Bedrooms | 🛋 1 Receptions | 🚿 1 Bathrooms | 📊 EPC Current E

Helliwell & Co. are proud to present this bright and spacious first floor flat which is situated in a fantastic and sought after location. The property includes a large reception, a separate well-presented kitchen, fully equipped with integrated appliances, two good sized double bedrooms and a tiled bathroom with bathtub and shower feature. The property further benefits from off-street parking, a communal garden, offered to the market unfurnished and is available now.

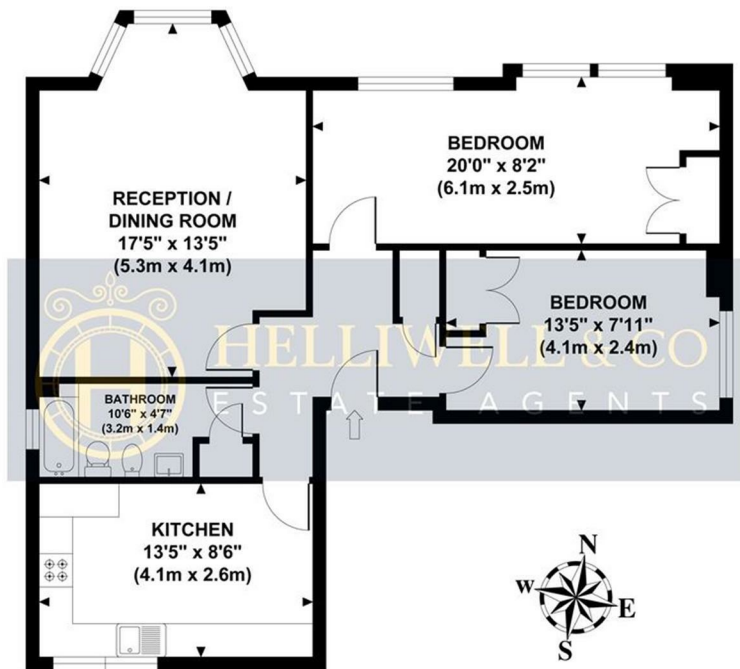
Madeley Road is in a great Ealing location, with both Ealing Broadway (Central, District, National Rail and Crossrail) and North Ealing (Piccadilly Line) within half a mile, the property is ideal for commuting into and around central London. Ealing Broadway's shopping centre is just around the corner and offers a variety of shops, cafes, bars, and restaurants. The beautiful open spaces of Ealing Common and Walpole Park are also close by.

- First Floor Flat
- Bright and Spacious
- Communal Garden
- Holding Deposit (1 weeks rent): £461.00
- Council Tax Band E
- Recently Redecorated
- Two Double Bedrooms
- Off Street Parking
- Security Deposit: £2,307.69
- Long Let (12-24 months+)



## MADELEY ROAD

Approximate Gross Internal Area  
711 sq ft / 66.1 sq m



**FIRST FLOOR**  
**GROSS INTERNAL**  
**FLOOR AREA 711 SQ FT**

Although every attempt has been made to ensure accuracy,  
all measurements are approximate and no responsibility is taken for any error, omission, or mid-statement.  
This floor plan is for illustrative purposes only and not to scale. Measured in accordance to RICS standards.

