



HELLIWELL & CO
ESTATE AGENTS

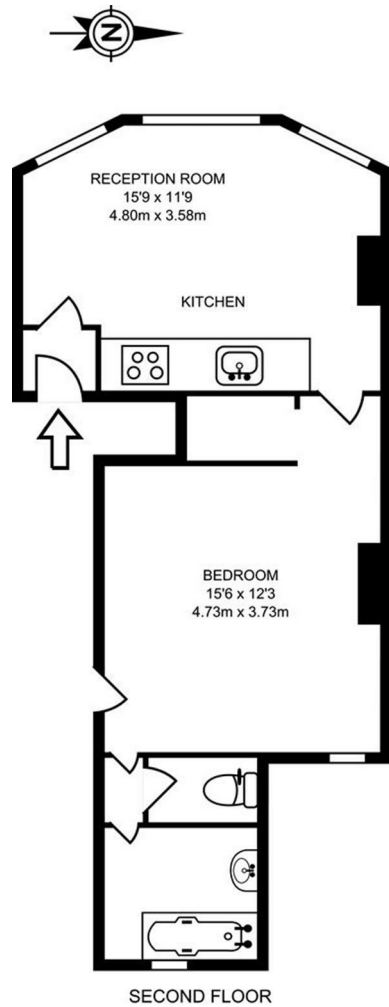
Bond Street, Ealing, W5
£1,500 Per Calendar Month



Helliwell & Co. are proud to present this bright and spacious one bedroom apartment. The property, which boasts a vast amount of light, comprises a large double bedroom, bright reception room with open plan kitchen, a tiled bathroom and a separate WC. The property further benefits from ample storage, is carpeted throughout and is offered to the market furnished.

Bond Street is ideally located for access to Ealing Broadway's station (Central and District line, Mainline and future Crossrail), as well as Walpole Park's charming open spaces, as well as Ealing's popular cafes, restaurants bars and shops.

- | | |
|---|--|
| ■ Fantastic Ealing Broadway Location | ■ Perfect Home for Single Professional or Couple |
| ■ Bright and Airy Double Bedroom | ■ Open Plan Reception with Kitchen |
| ■ Furnished | ■ Available Beginning of September 2025 |
| ■ Holding Deposit (1 weeks rent): £346.00 | ■ Security Deposit (5 weeks rent): £1,730.77 |
| ■ Council Tax Band: C | ■ Long Let (12-24 months+) |



419 SQ FT/38.98 SQ M

