







 3 Bedrooms |
  1 Reception |
  2 Bathrooms |
  EPC Current C

Helliwell and Co are delighted to present this beautifully presented three bedroom flat which has its own private entrance and is offered to the market unfurnished. With a neutral décor throughout, the property offers plenty of natural light and space, making it an ideal home for a family. The property has a generous reception room, a separate kitchen, equipped with integrated appliances and plenty of space for dining, two double bedrooms, an additional single bedroom and a modern family bathroom. Further benefits include a well maintained private garden and gas central heating.

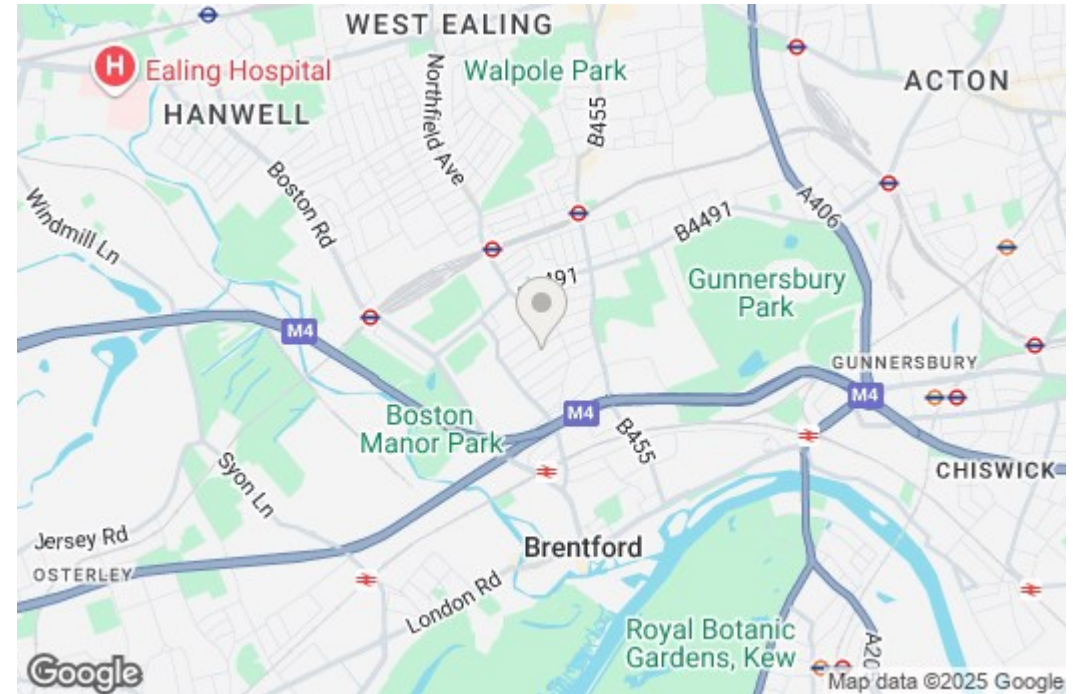
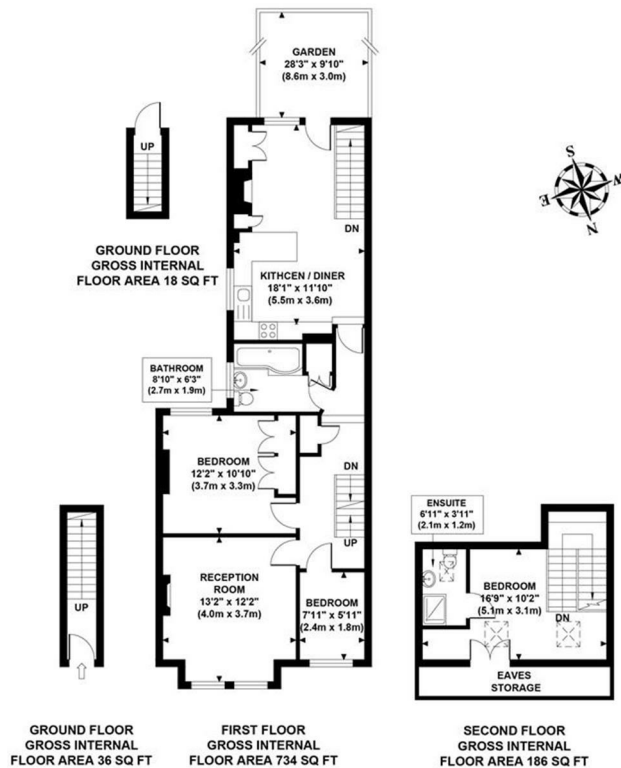
Carlyle Road is located on a quiet residential road, with great access to Northfields Tube Station (Piccadilly line) and various bus links as well as access to the A4/M4 for motorists. The property further benefits from a range of local shops, cafes, pubs and restaurants within the vicinity along with the leafy green open spaces of Blondin and Boston Manor Parks close by.

- Private Entrance
- Modern, Bright & Spacious
- Private Garden
- Holding Deposit (one weeks rent): £553.00
- Council Tax Band D
- First Floor Flat
- Three Bedrooms
- Available September 2025
- Security Deposit (five weeks rent): £2,769.23
- Long Let (12-24 months+)

HELLIWELL & CO.

CARLYLE ROAD

Approximate Gross Internal Area
973 sq ft / 90.40 sq m



Although every attempt has been made to ensure accuracy,
all measurements are approximate and no responsibility is taken for any error, omission, or mid-statement.
This floor plan is for illustrative purposes only and not to scale. Measured in accordance to RICS standards.