







 2 Bedrooms
 |
  1 Receptions
 |
  1 Bathrooms
 |
  EPC Current E

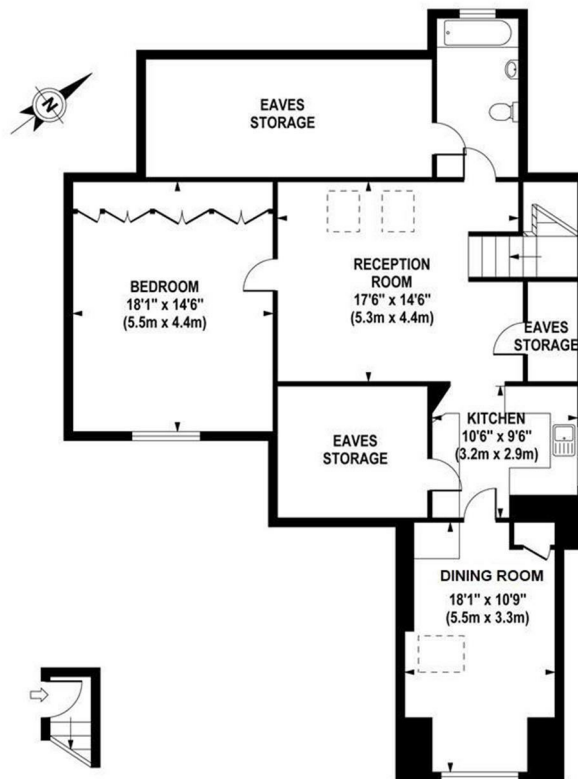
Helliwell & Co. are proud to present this bright and spacious top floor flat which has recently been redecorated throughout and has had a new kitchen installed. The property has a large reception room with skylight windows, a separate second reception / dining room, an exceptionally large double bedroom, a brand new modern kitchen and a fully tiled bathroom. Neutrally decorated throughout, further benefits include gas central heating, double glazing and ample storage space. Offered to the market furnished and is available now.

Hanger Lane is situated in a fantastic part of North Ealing, as it is ideally located for access to both North Ealing (Piccadilly line) and Ealing Broadway (Central, District and Elizabeth lines, Mainline) tube stations, as well as multiple bus routes, and good access for motorists for the A40, local amenities and numerous bars, cafes and restaurants.

- Recently Redecorated Top Floor Flat
- Exceptionally Large Double Bedroom
- Fully Tiled Bathroom
- Holding Deposit (1 weeks rent): £438.00
- Council Tax Band C
- Two Large Receptions
- Brand New Kitchen
- Ample Storage & Off Street Parking Space
- Security Deposit (5 weeks rent): £2,192.31
- Long Let (12-24 months+)

HANGER LANE

Approximate Gross Internal Area 942 sq ft / 87.5 sq m
(Excluding Eaves Storage)



FIRST FLOOR
GROSS INTERNAL
FLOOR AREA 16 SQ FT

SECOND FLOOR
GROSS INTERNAL
FLOOR AREA 926 SQ FT

Although every attempt has been made to ensure accuracy, all measurements are approximate.
The floor plan's for illustrative purposes only and not to scale. Measured in accordance to RICS standards.

