



HELLIWELL & CO
ESTATE AGENTS

Hanger Lane, Ealing, W5
£1,875 Per Calendar Month





🛏️ 2 Bedrooms | 🛋️ 1 Receptions | 🚿 1 Bathrooms | 📊 EPC Current D

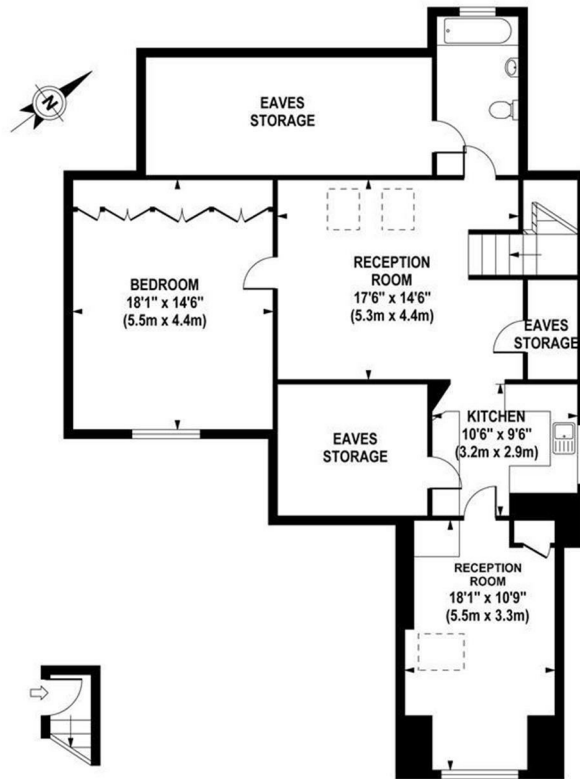
(Photos coming soon!) - Helliwell & Co. are delighted to present this two double bedroom flat, with a large living room and open plan modern kitchen. Fully redecorated throughout, and a brand new kitchen installed - early viewings are advised!

Hanger Lane is situated in a fantastic part of North Ealing, as it is ideally located for access to both North Ealing (Piccadilly line) and Ealing Broadway (Central and District lines, mainline and future Crossrail) tube stations, as well as multiple bus routes, local amenities and numerous bars, cafes and restaurants.

- Top Floor Apartment
- Large Living Room
- Ample Storage Space
- Holding Deposit (1 weeks rent): £444.00
- Long Let
- Two Double Bedrooms
- Brand New Kitchen
- Immediate Move-in
- Security Deposit (5 weeks rent): £2,221.15
- Council Tax Band C

HANGER LANE

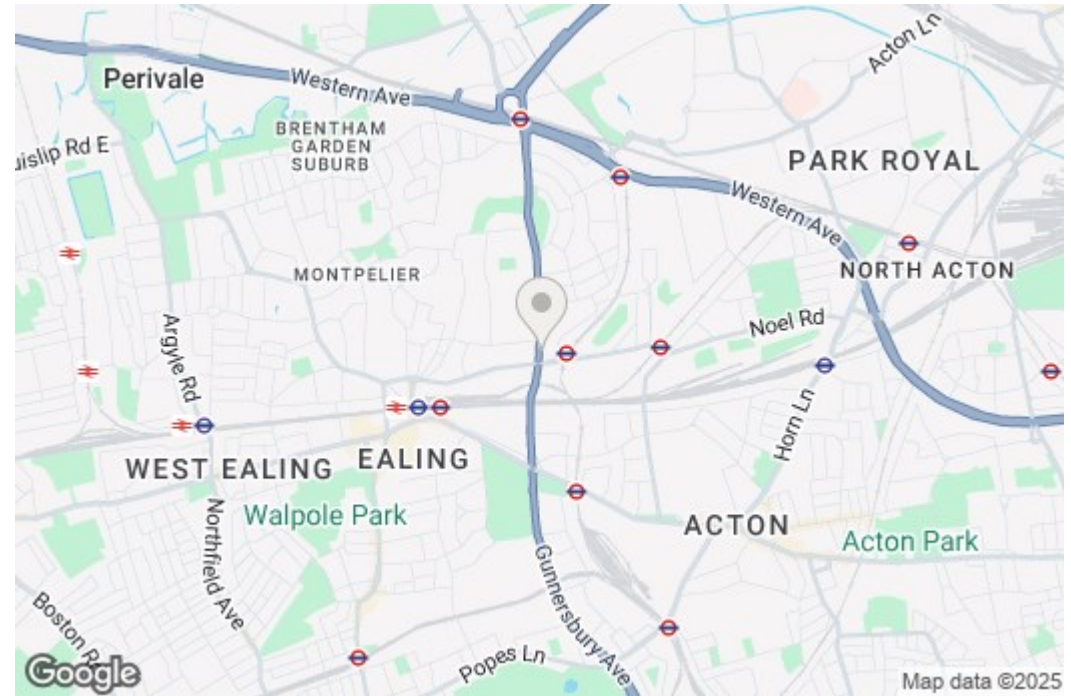
Approximate Gross Internal Area 942 sq ft / 87.5 sq m
(Excluding Eaves Storage)



FIRST FLOOR
GROSS INTERNAL
FLOOR AREA 16 SQ FT

SECOND FLOOR
GROSS INTERNAL
FLOOR AREA 926 SQ FT

Although every attempt has been made to ensure accuracy, all measurements are approximate. The floor plan's for illustrative purposes only and not to scale. Measured in accordance to RICS standards.



Map data ©2025