



HELLIWELL & CO
ESTATE AGENTS

Bedford Road, Ealing, W13
£2,500 Per Calendar Month





 3 Bedrooms |  1 Receptions |  1 Bathrooms |  EPC Current D

Helliwell and Co are delighted to present this charming three bedroom terraced house, ideally located on the sought-after Bedford Road in Ealing, W13.

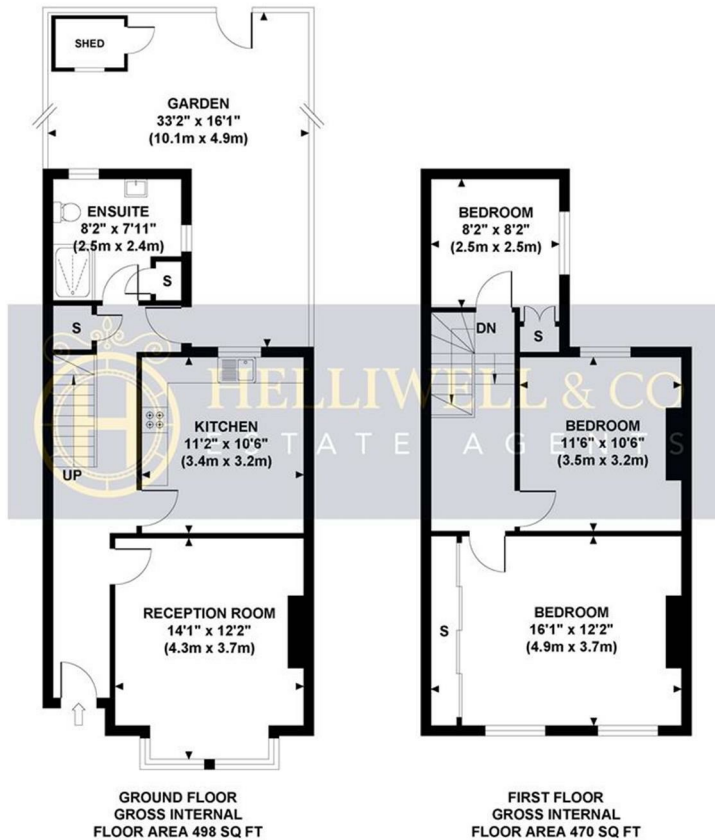
Offering approximately 957 sq ft of well-proportioned living space, this attractive home is perfectly suited to families or professional sharers seeking generous accommodation in a prime West London location. The property features a bright and welcoming reception room, ideal for both everyday living and entertaining, a separate fitted kitchen with integrated appliances, and three spacious bedrooms, each offering excellent proportions and natural light. The family bathroom is well arranged and practical, offering a bathtub and additional walk-in shower, complementing the comfortable layout of the house. Further benefits include permit on street parking, a private rear garden, and period features.

Situated in the heart of Ealing, the property benefits from excellent local amenities including a wide selection of shops, cafés, restaurants and supermarkets in nearby West Ealing and Ealing Broadway. Beautiful green open spaces such as Walpole Park and Lammas Park are within easy reach, offering the perfect setting for leisure and recreation. The area is exceptionally well connected, with West Ealing and Ealing Broadway (Central & Piccadilly lines) stations providing fast and convenient access into central London via the Elizabeth Line, as well as National Rail and Underground services, making this an ideal home for commuters.

- Terraced Family House
- Charming Reception Room
- Private Rear Garden
- Holding Deposit (1 weeks rent): £576.00
- Council Tax Band E
- Three Bright & Spacious Bedrooms
- Family Bathroom with Bathtub & Walk-in Shower
- Excellent Transport Links
- Security Deposit (5 weeks rent): £2,884.61
- Long Term Let

BEDFORD ROAD

Approximate Gross Internal Area
968 sq ft / 89.93 sq m



Although every attempt has been made to ensure accuracy, all measurements are approximate and no responsibility is taken for any error, omission, or mid-statement. This floor plan is for illustrative purposes only and not to scale. Measured in accordance to RICS standards.