



HELLIWELL & CO  
ESTATE AGENTS

Hamilton Road, Ealing, W5  
Guide Price £399,950





 1 Bedrooms |  1 Receptions |  1 Bathrooms |  EPC Current C

This recently refurbished top floor apartment, offers ample amounts of natural light and space throughout. The property has an impressive open plan living area with a modern kitchen featuring integrated appliances, a large double bedroom with ample built-in storage, a stylish bathroom fully equipped with a bathtub and overhead shower feature. Further benefits include attractive wooden flooring, underfloor heating, spot lights, a sky light feature and a neutral décor throughout.

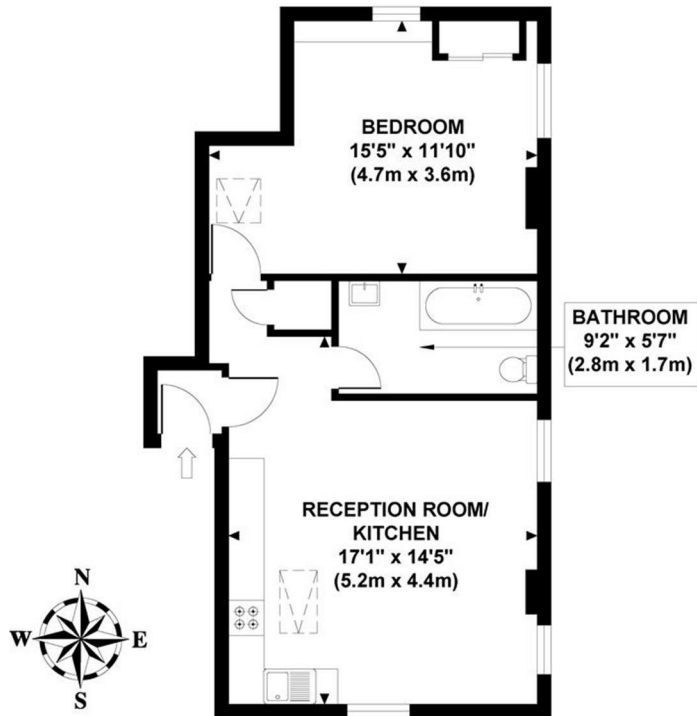
Located on the popular Hamilton Road in Ealing Broadway, the property is ideally located for access to both Ealing Broadway (Central, District and Elizabeth lines ) and Ealing Common (District and Piccadilly lines) tube stations, as well as the beautiful open spaces of Ealing Common. There are multiple local shops, cafes and restaurants nearby, including the bustling Ealing Broadway shopping centre.

- Recently Refurbished
- Fantastic Open Plan Living
- Tenure: Leasehold (125 years)
- Ground Rent: £250pa
- Moments away from Ealing Broadway
- Large Double Bedroom
- Service Charge: £600pa
- Council Tax Band C

HELLIWELL & CO.

**HAMILTON ROAD**

Approximate Gross Internal Area  
460 sq ft / 42.70 sq m



**THIRD FLOOR**  
**GROSS INTERNAL**  
**FLOOR AREA 460 SQ FT**

Although every attempt has been made to ensure accuracy,  
all measurements are approximate and no responsibility is taken for any error, omission, or mid-statement.  
This floor plan is for illustrative purposes only and not to scale. Measured in accordance to RICS standards.

