







 2 Bedrooms |  1 Receptions |  1 Bathrooms |  EPC Current E

Helliwell & Co are proud to present this delightful second floor flat, which offers a perfect blend of comfort and convenience and benefits from beautiful communal gardens. Spanning an impressive 717 square feet, the property features two well proportioned bedrooms, making it an ideal choice for a professional couple looking for a home with a separate office space. Upon entering, you are welcomed into a bright reception room perfect for entertaining guests or simply relaxing after a long day. There are also two bedrooms, a spacious fitted kitchen and a good sized bathroom.

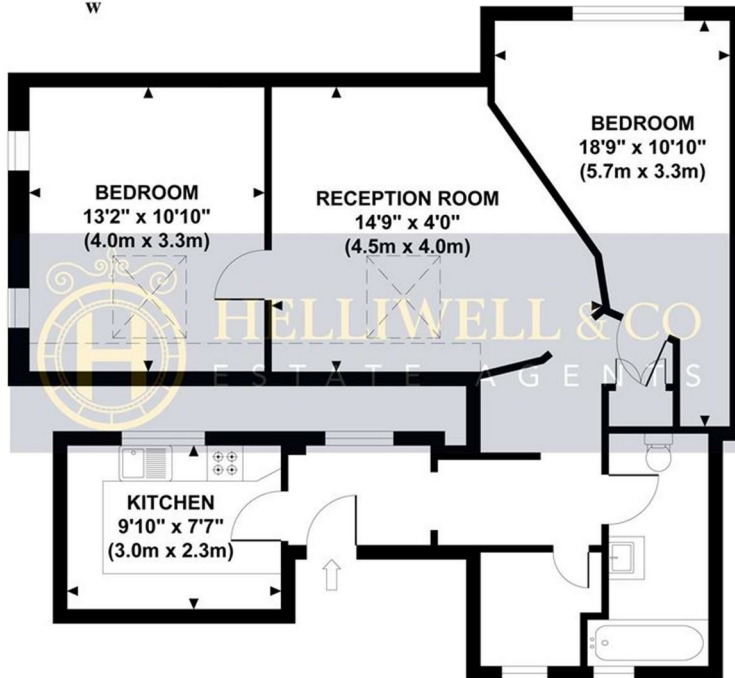
Woodville Road is perfectly located for access to Ealing Broadways tube station (Central, District, Elizabeth and Mainline) and it's popular shopping centre, which offers a wide range of shops, cafes, restaurants and bars. The beautiful green open spaces of Walpole park and Ealing Common are also close by, as well as the prestigious Dickens Yard and Film Works developments.

- Conversion Flat
- Bright & Spacious
- Cosy Lounge & Fully Fitted Kitchen
- Holding Deposit (1 weeks rent): £553.00
- Council Tax Band: D
- Second Floor
- Two Bedrooms
- Stunning Communal Garden
- Security Deposit (5 weeks rent): £2,769.23
- Long Let (12-24 months+)

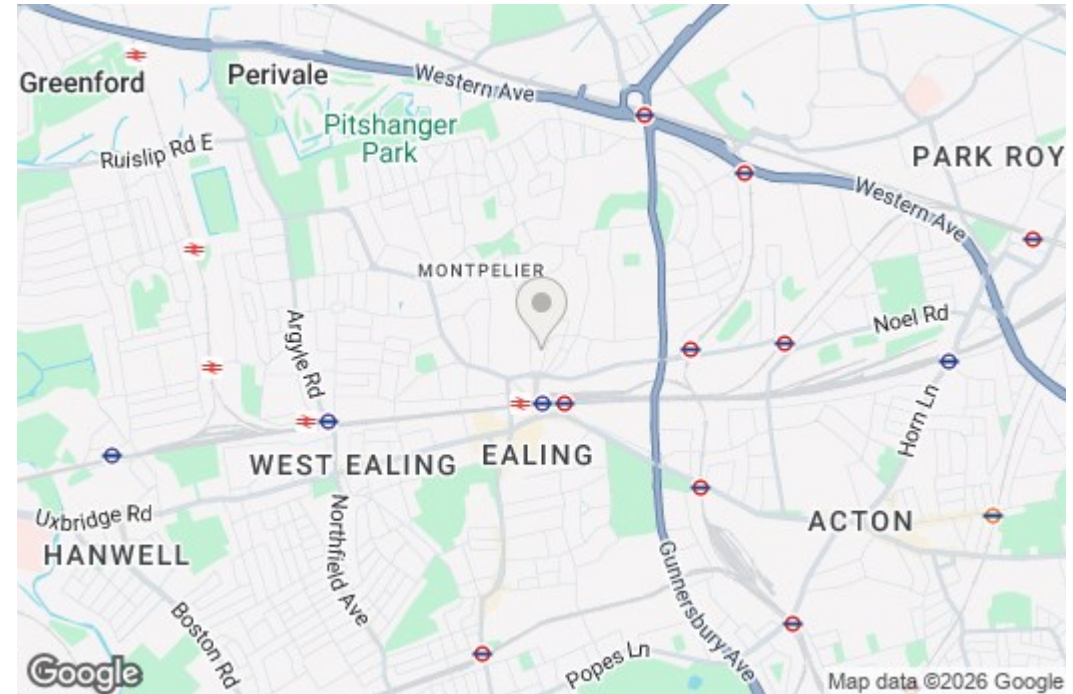
WOODVILLE ROAD

Approximate Gross Internal Area

717 sq ft / 66.6 sq m



**SECOND FLOOR
GROSS INTERNAL
FLOOR AREA 717 SQ FT**



Although every attempt has been made to ensure accuracy, all measurements are approximate and no responsibility is taken for any error, omission, or mis-statement. This floor plan is for illustrative purposes only and not to scale. Measured in accordance to RICS standards.