



HELLIWELL & CO
ESTATE AGENTS

Ealing Green, Ealing, W5
£3,275 Per Calendar Month



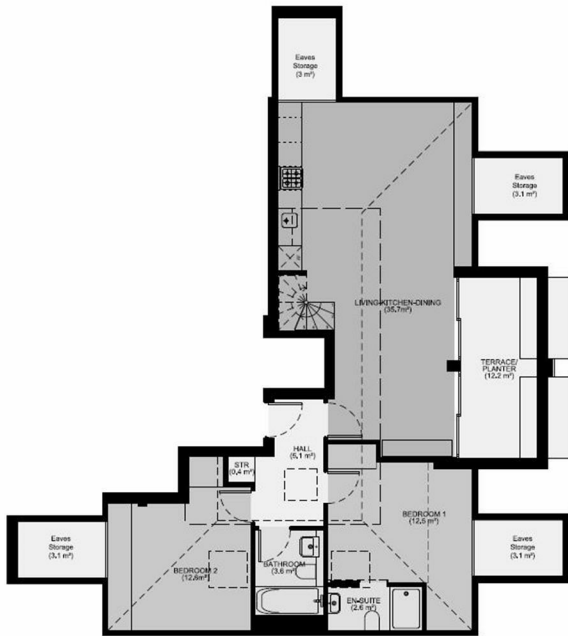


 3 Bedrooms |  1 Receptions |  2 Bathrooms |  EPC Current

Helliwell & Co. are delighted to present this well presented and modern, three bedroom, duplex apartment, which is offered to the market furnished or unfurnished and has a large balcony overlooking Ealing Green. The property has a bright and spacious reception room with a modern fully fitted kitchen, three bedrooms (one of which has an en suite bathroom), and a family bathroom. Further benefits include an entry phone system, a high quality of furniture, ample storage space and off street parking (negotiable).

Walpole Court is ideally located for access to Ealing Broadway's tube station (Central, District, Elizabeth and Mainline) and popular shopping centre, as well as multiple local shops, cafes and restaurants Ealing has to offer. The charming open spaces of Lammas and Walpole Parks are also close by, as well as the prestigious Dickens Yard and Filmworks developments.

- Stunning Duplex Apartment
- Two Modern Bathrooms
- Off Street Parking (Negotiable)
- Holding Deposit (1 weeks rent): £755.00
- Council Tax Band E
- Three Good Sized Bedrooms
- Balcony with Views of Ealing Green
- Furnished or Unfurnished
- Security Deposit (5 weeks rent): £3,778.84
- Long Let (12-24 months+)



Dimensions

Circulation	5.1 sq m	54.6 sq ft
Storage	9.6 sq m	103.3 sq ft
Kitchen/Living/Dining room	35.7 sq m	384.2 sq ft
Bedroom	12.5 sq m	134.5 sq ft
Bedroom 2	12.6 sq m	135.6 sq ft
Bathroom	3.6 sq m	38.7 sq ft
En-Suite	2.6 sq m	27.9 sq ft
Terrace	12.2 sq m	131.3 sq ft
Mezzanine	21.9 sq m	235.7 sq ft
Total Gross Internal	96.9 sq m	1043 sq ft

Level location **Floor locator**

